

# Community Health Needs Assessment (CHNA) 2018 Secondary Data Analysis

Berks, Cumberland, Dauphin, Lancaster & Lebanon Counties

Austin C. Cohrs, MPH

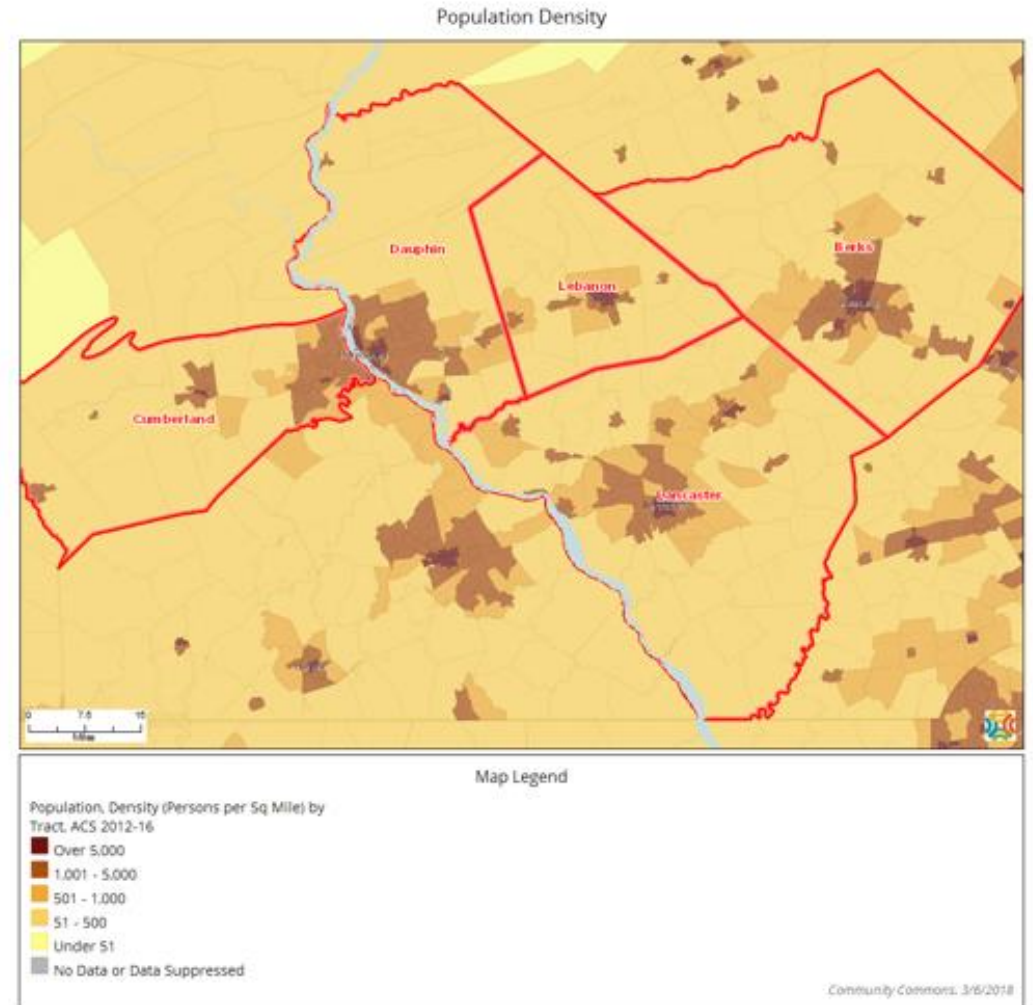
Penn State Health

# Demographic Analysis

Berks, Cumberland, Dauphin, Lancaster & Lebanon Counties

# Population Density

Population Density, 2012-2016 5-year estimate			
	Total Population	Total Land Area (Square Miles)	Population Density (Per Square Mile)
<b>Report Area</b>	1,599,957	3,232.65	494.94
<b>Berks County, PA</b>	414,097	856.39	<b>483.54</b>
<b>Cumberland County, PA</b>	243,838	545.5	<b>447</b>
<b>Dauphin County, PA</b>	271,962	525.06	<b>517.97</b>
<b>Lancaster County, PA</b>	533,110	943.87	<b>564.81</b>
<b>Lebanon County, PA</b>	136,950	361.83	<b>378.49</b>
<b>Pennsylvania</b>	12,783,977	44,742.38	285.72
<b>United States</b>	318,558,162	3,532,068.58	90.19

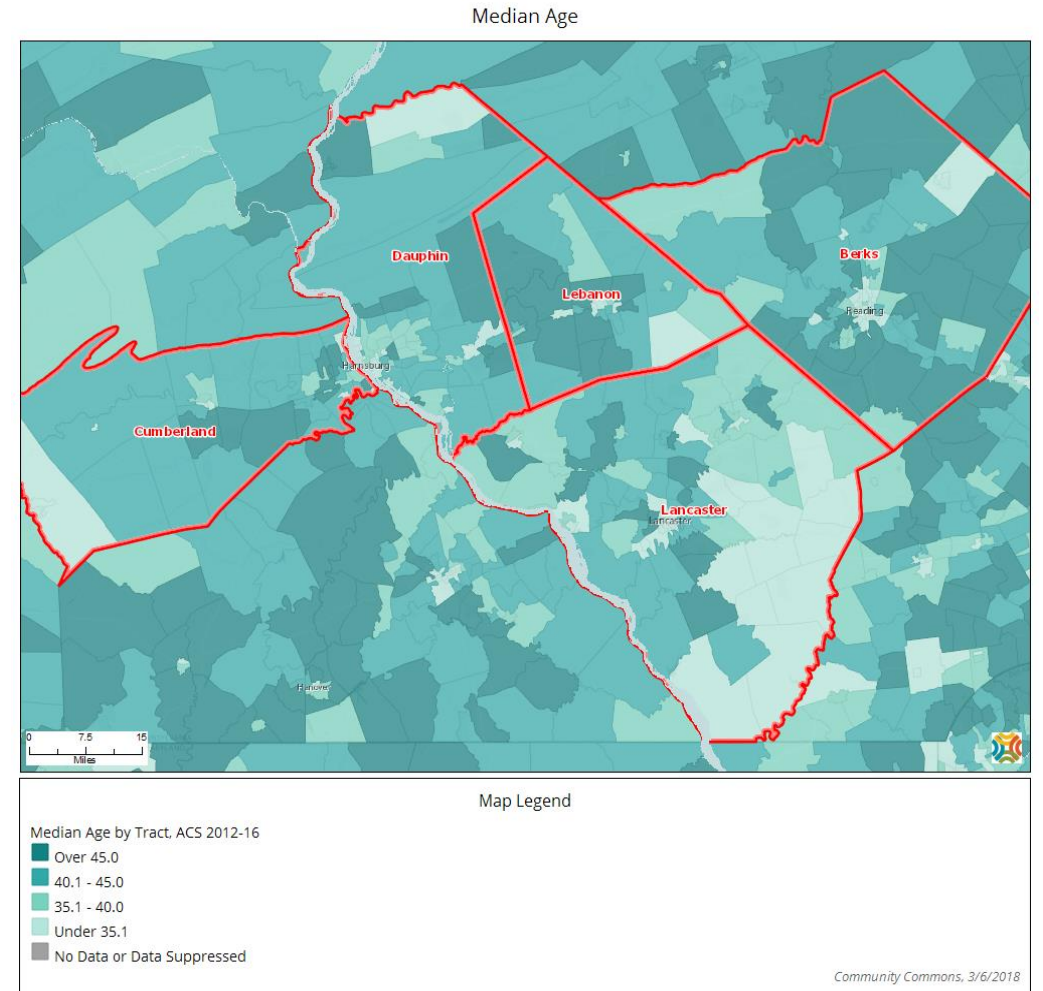


# Population Projection and Growth Rate, 2017-2022

Population Projection and Growth Rate, 2017-2022			
	Population 2017	Population Projection 2022	2017-2022 Annual Growth Rate
Berks County, PA	420,497	426,817	0.3%
Cumberland County, PA	253,836	267,919	1.09%
Dauphin County, PA	276,447	282,518	0.44%
Lancaster County, PA	546,551	565,637	0.69%
Lebanon County, PA	139,912	144,470	0.64%
Pennsylvania	12,976,662	13,138,130	0.25%
United States	327,514,334	341,323,594	0.83%

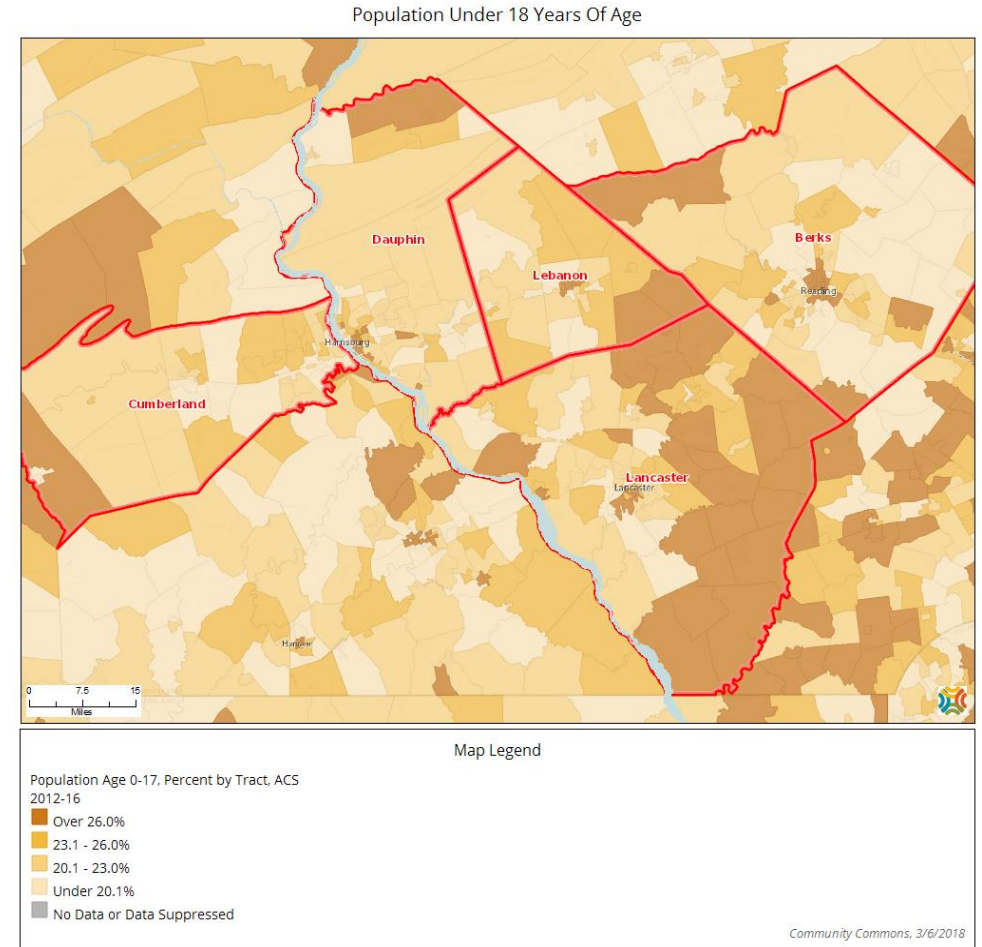
# Median Age

	Total Population	Median Age
Berks County, PA	414,097	39.8
Cumberland County, PA	243,838	40.7
Dauphin County, PA	271,962	39.6
Lancaster County, PA	533,110	38.5
Lebanon County, PA	136,950	41.2
Pennsylvania	12,783,977	40.6
United States	318,558,162	37.7



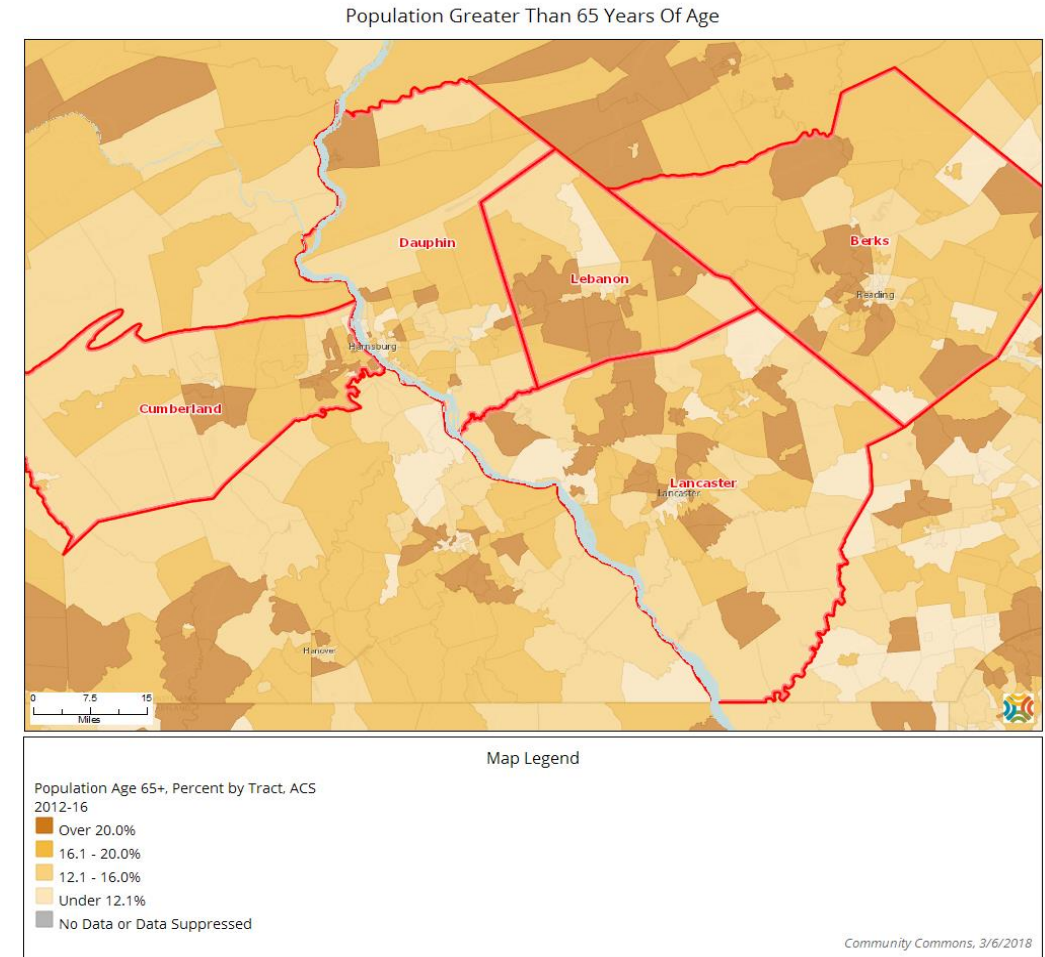
# Population Under 18 Years of Age

	Total Population	Population Age 0-17	Percent Population Age 0-17
<b>Report Area</b>	1,599,957	365,840	22.87%
<b>Berks County, PA</b>	414,097	94,844	22.90%
<b>Cumberland County, PA</b>	243,838	49,680	20.37%
<b>Dauphin County, PA</b>	271,962	61,236	22.52%
<b>Lancaster County, PA</b>	533,110	128,533	<b>24.11%</b>
<b>Lebanon County, PA</b>	136,950	31,547	23.04%
<b>Pennsylvania</b>	12,783,977	2,704,268	21.15%
<b>United States</b>	318,558,162	73,612,438	23.11%



# Population Greater Than 65 Years Of Age

	Total Population	Population Age 65+	Percent Population Age 65+
<b>Report Area</b>	1,599,957	260,974	16.31%
<b>Berks County, PA</b>	414,097	65,593	15.84%
<b>Cumberland County, PA</b>	243,838	41,584	17.05%
<b>Dauphin County, PA</b>	271,962	41,492	15.26%
<b>Lancaster County, PA</b>	533,110	87,338	16.38%
<b>Lebanon County, PA</b>	136,950	24,967	18.23%
<b>Pennsylvania</b>	12,783,977	2,133,247	16.69%
<b>United States</b>	318,558,162	46,180,632	14.50%



# Race/Ethnicity

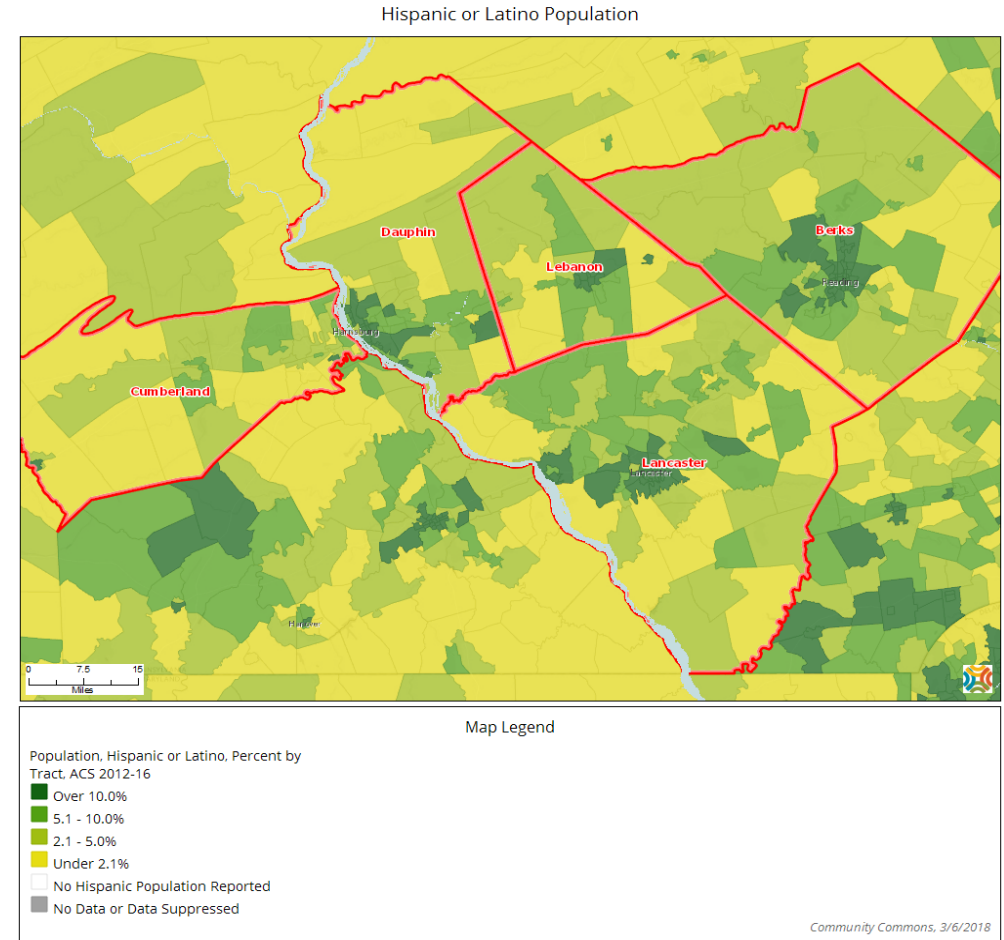
	White	Black	Asian	Some Other Race	Multiple Races	Hispanic or Latino
Report Area	84.45%	6.46%	2.35%	3.28%	3.09%	11.05%
Berks County, PA	83.62%	4.83%	1.38%	4.21%	5.05%	18.82%
Cumberland County, PA	89.08%	3.55%	3.70%	1.23%	2.36%	3.40%
Dauphin County, PA	71.77%	18.33%	3.78%	2.67%	3.19%	8.24%
Lancaster County, PA	88.56%	4.13%	2.06%	2.98%	2.09%	9.77%
Lebanon County, PA	87.94%	2.06%	1.21%	6.50%	2.16%	11.69%
Pennsylvania	81.37%	11.03%	3.14%	1.98%	2.24%	6.60%
United States	73.35%	12.63%	5.22%	4.75%	3.06%	17.33%

Race Growth Rate, 2017-2022			
	White Population % Change	Black Population % Change	Hispanic Population % Change
Berks County, PA	-2.78%	0.35%	3.73%
Cumberland County, PA	-2.39%	0.61%	0.93%
Dauphin County, PA	-2.11%	-0.12%	2.05%
Lancaster County, PA	-2.00%	0.51%	1.83%
Lebanon County, PA	-2.53%	0.47%	3.54%



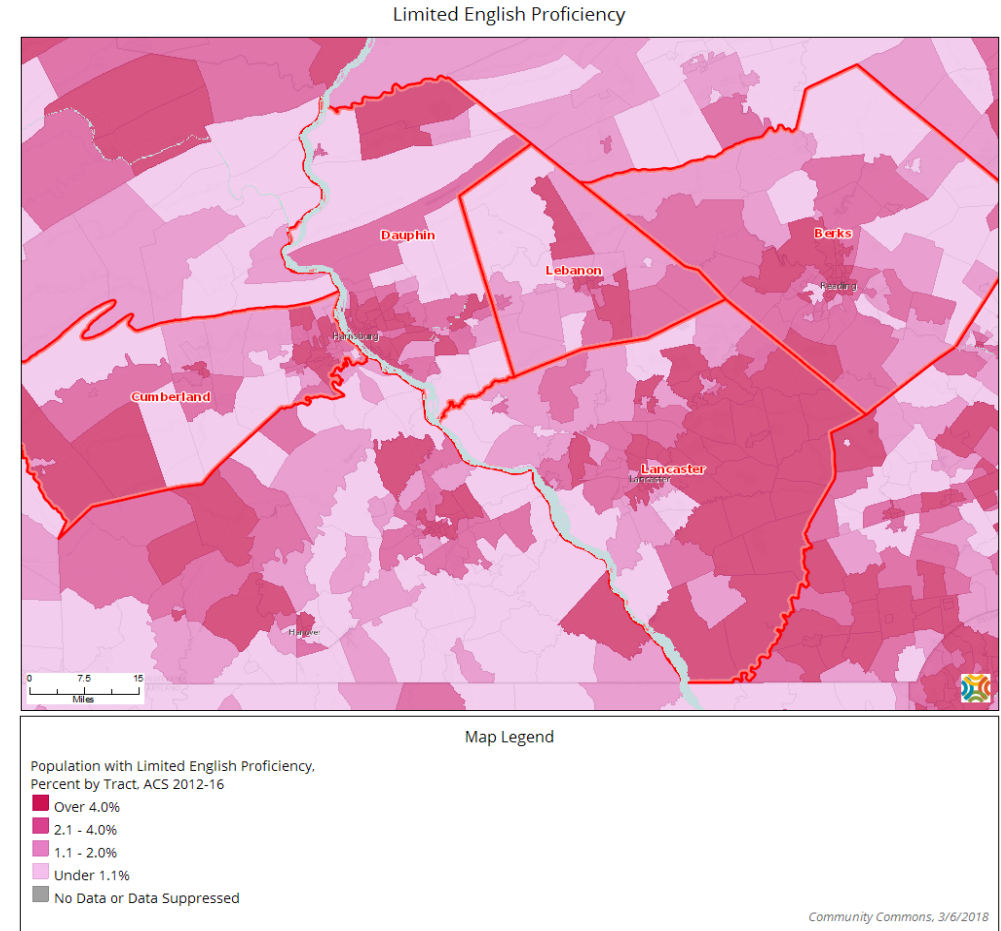
# Hispanic or Latino Population

	Total Population	Hispanic or Latino Population	Percent Population Hispanic or Latino
Report Area	1,599,957	176,733	11.05%
Berks County, PA	414,097	77,946	18.82%
Cumberland County, PA	243,838	8,282	3.40%
Dauphin County, PA	271,962	22,415	8.24%
Lancaster County, PA	533,110	52,083	9.77%
Lebanon County, PA	136,950	16,007	11.69%
Pennsylvania	12,783,977	843,164	6.60%
United States	318,558,162	55,199,107	17.33%



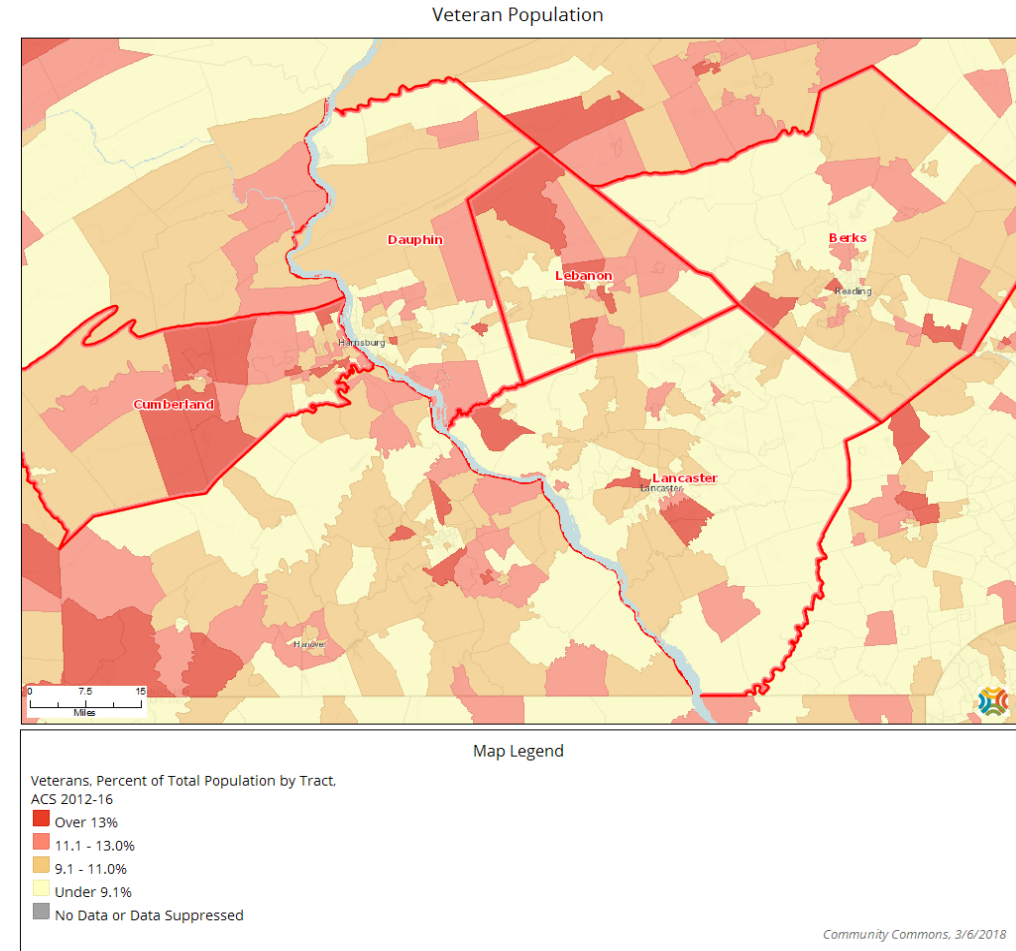
# Limited English Proficiency

	Population Age 5+	Population Age 5+ with Limited English Proficiency	Percent Population Age 5+ with Limited English Proficiency
<b>Report Area</b>	1,501,194	81,958	5.46%
<b>Berks County, PA</b>	389,562	28,024	7.19%
<b>Cumberland County, PA</b>	230,704	7,309	3.17%
<b>Dauphin County, PA</b>	254,899	12,070	4.74%
<b>Lancaster County, PA</b>	497,591	28,938	5.82%
<b>Lebanon County, PA</b>	128,438	5,617	4.37%
<b>Pennsylvania</b>	12,069,379	501,180	4.15%
<b>United States</b>	298,691,202	25,440,956	8.52%



# Veteran Population

	Total Population Age 18+	Total Veterans	Veterans, Percent of Total Population
Report Area	1,232,852	105,724	8.58%
Berks County, PA	319,140	25,822	8.09%
Cumberland County, PA	193,753	19,925	10.28%
Dauphin County, PA	210,395	18,275	8.69%
Lancaster County, PA	404,391	31,537	7.80%
Lebanon County, PA	105,173	10,165	9.67%
Pennsylvania	10,074,933	840,258	8.34%
United States	243,935,157	19,535,341	8.01%

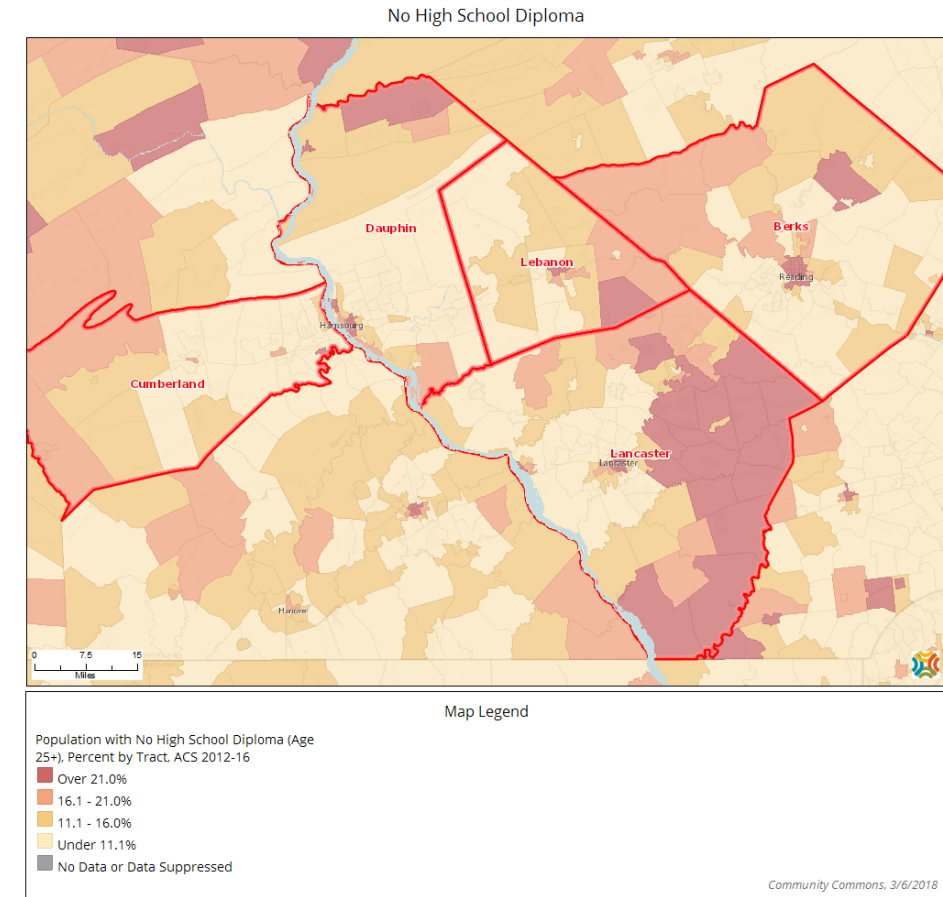


# Social & Economic Factors

Berks, Cumberland, Dauphin, Lancaster & Lebanon Counties

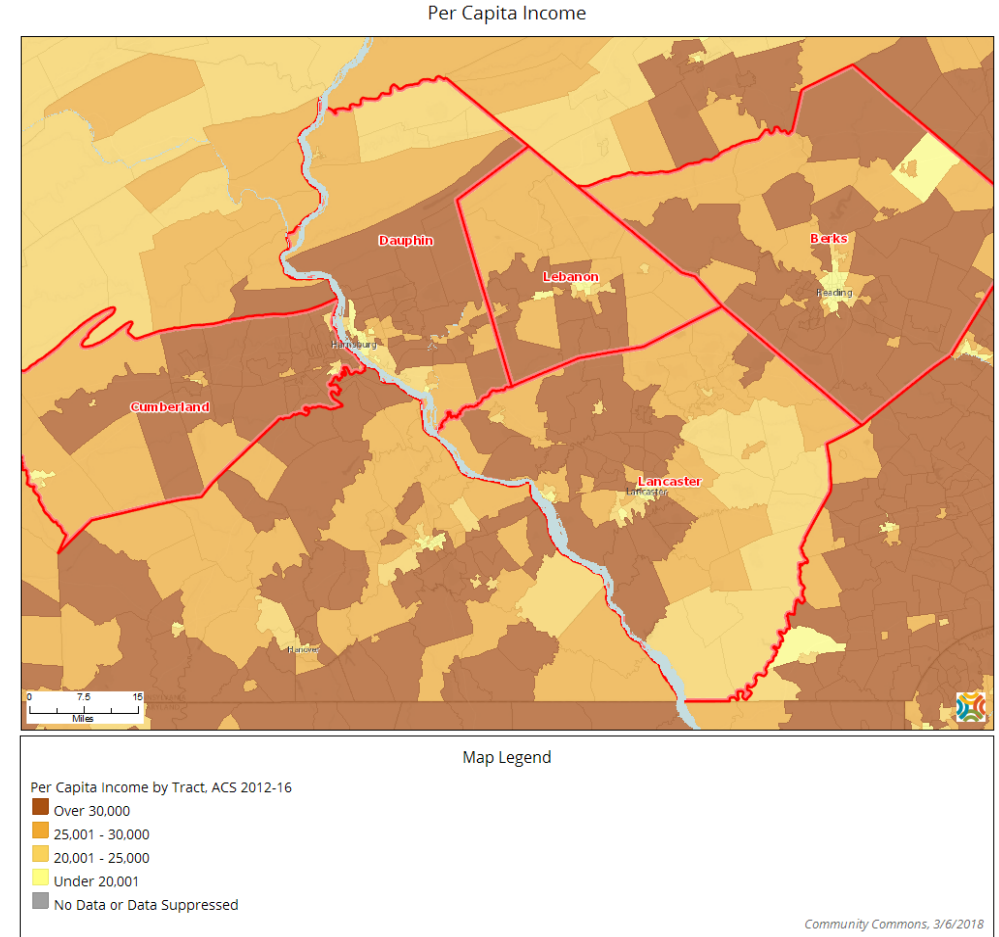
# No High School Diploma

	Total Population Age 25+	Percent Population Age 25+ with No High School Diploma	Percent Population Age 25+ with Bachelor's Degree or Higher
Report Area	1,083,405	13.20%	26.52%
Berks County, PA	278,049	14.47%	23.62%
Cumberland County, PA	169,530	8.63%	33.64%
Dauphin County, PA	187,723	10.92%	29.32%
Lancaster County, PA	354,397	15.40%	25.65%
Lebanon County, PA	93,706	13.97%	19.86%
Pennsylvania	8,849,846	10.46%	29.33%
United States	213,649,147	13.02%	30.32%



# Per Capita Income

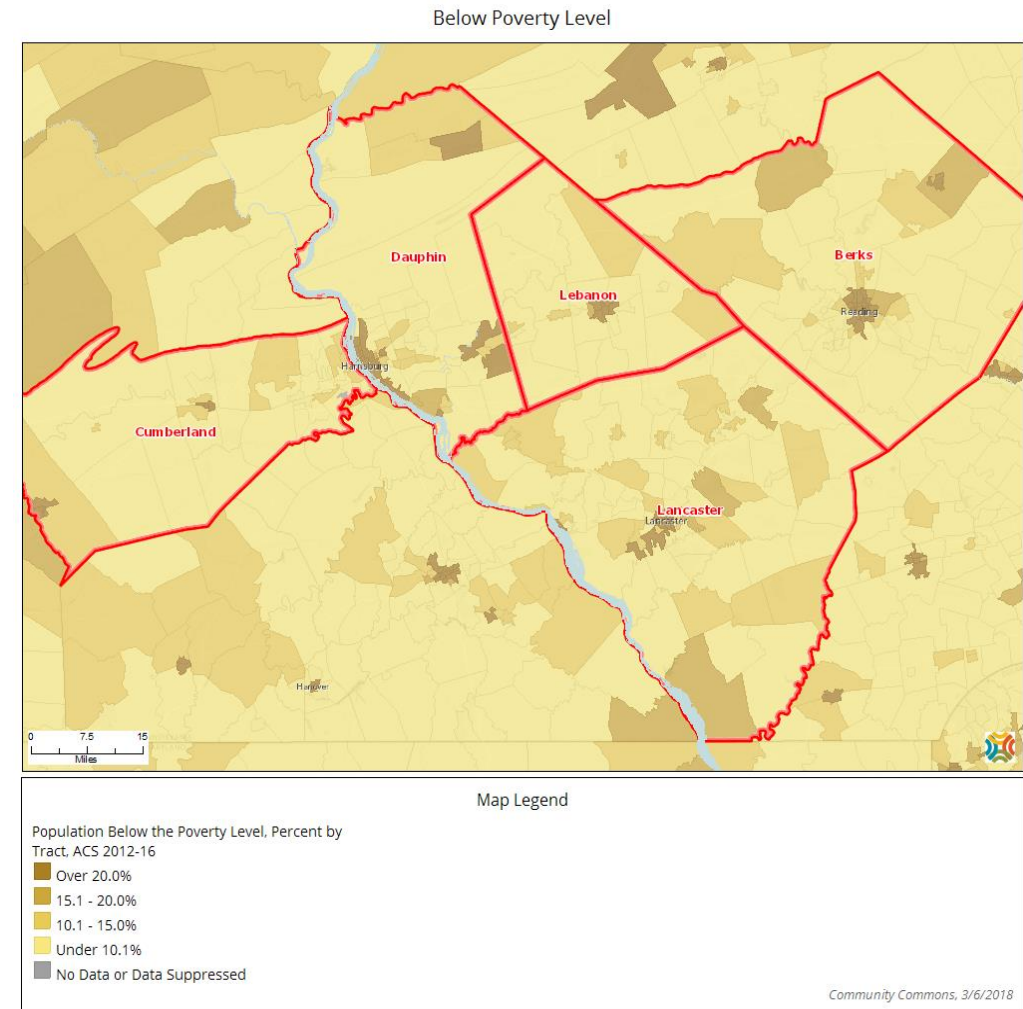
	Per Capita Income	Median Family Income
Report Area	\$29,054	No Data
Berks County, PA	\$27,844	\$69,115
Cumberland County, PA	\$33,078	\$80,175
Dauphin County, PA	\$30,067	\$68,993
Lancaster County, PA	\$28,151	\$70,512
Lebanon County, PA	\$27,050	\$67,325
Pennsylvania	\$30,136	\$69,960
United States	\$29,829	\$67,871



# Poverty

	Population in Poverty	Percent Population in Poverty	Percent Population Under Age 18 in Poverty
Report Area	183,377	11.82%	17.86%
Berks County, PA	57,329	14.30%	22.57%
Cumberland County, PA	19,828	8.61%	12.14%
Dauphin County, PA	35,950	13.44%	20.37%
Lancaster County, PA	55,977	10.79%	15.95%
Lebanon County, PA	14,293	10.70%	15.67%
Pennsylvania	1,647,762	13.32%	19.07%
United States	46,932,225	15.11%	21.17%

	Children Eligible for Free Lunch by Year				
	2010-11	2012-13	2013-14	2014-15	2015-16
Report Area	35.65%	39.21%	41.31%	44.71%	45.74%
Berks County, PA	40.51%	43.20%	46.46%	49.27%	51.01%
Cumberland County, PA	21.26%	24.94%	25.76%	27.17%	28.36%
Dauphin County, PA	41.27%	43.92%	46.82%	51.18%	47.89%
Lancaster County, PA	34.54%	39.02%	39.87%	44.79%	47.01%
Lebanon County, PA	33.10%	38.88%	41.51%	42.44%	47.80%
Pennsylvania	39.41%	41.52%	43.58%	45.63%	48.16%
United States	48.15%	51.32%	51.99%	51.80%	52.30%



# Food and Stress (6,8,10, and 12th Grades)

	Worried about running out of food*			Skipped a meal because of family finances*		
	2013	2015	2017	2013	2015	2017
Berks County, PA	17.3%	18.9%	17.7%	7.5%	8.9%	8.7%
Cumberland County, PA	9.5%	10.9%	10.8%	4.4%	4.9%	5.2%
Dauphin County, PA	11.1%	14.4%	14.0%	5.1%	6.1%	6.5%
Lancaster County, PA	11.1%	14.6%	12.9%	5.5%	7.2%	6.4%
Lebanon County, PA	12.4%	14.4%	15.7%	5.5%	6.8%	7.7%
Pennsylvania	9.5%	13.7%	13.4%	4.4%	6.6%	6.8%

\*One or more times in the past year



# Housing & Physical Environment

Berks, Cumberland, Dauphin, Lancaster & Lebanon Counties

# Total Housing Units

Total Housing Units, 2012-2016		
	Total Housing Units	Total Occupied Housing Units
<b>Report Area</b>	651,998	607,581
<b>Berks County, PA</b>	164,853	152,451
<b>Cumberland County, PA</b>	102,772	96,501
<b>Dauphin County, PA</b>	121,889	110,211
<b>Lancaster County, PA</b>	206,308	196,171
<b>Lebanon County, PA</b>	56,176	52,247
<b>Pennsylvania</b>	5,592,175	4,961,929
<b>United States</b>	134,054,899	117,716,237

# Housing with Substandard Conditions

Housing Units with Substandard Conditions		
	Occupied Housing Units with One or More Substandard Conditions	Percent Occupied Housing Units with One or More Substandard Conditions
Report Area	180,528	29.71%
Berks County, PA	48,681	31.93%
Cumberland County, PA	25,234	26.15%
Dauphin County, PA	32,165	29.18%
Lancaster County, PA	59,947	30.56%
Lebanon County, PA	14,501	27.75%
Pennsylvania	1,485,705	29.94%
United States	39,729,263	33.75%

# Cost Burdened Households

Cost Burdened Households				
	Rental Households	Percentage of Rental Households that are Cost Burdened	Owner Occupied Households With Mortgage	Percentage of Owner Occupied Households w/ Mortgages that are Cost Burdened
<b>Report Area</b>	189,680	45.86%	266,838	26.79%
<b>Berks County, PA</b>	42,979	<b>49.88%</b>	70,734	<b>29.18%</b>
<b>Cumberland County, PA</b>	28,383	41.63%	44,473	24.14%
<b>Dauphin County, PA</b>	40,505	44.04%	44,464	24.89%
<b>Lancaster County, PA</b>	61,916	<b>47.60%</b>	85,082	27.22%
<b>Lebanon County, PA</b>	15,897	40.37%	22,085	26.61%
<b>Pennsylvania</b>	1,536,223	45.54%	2,090,142	27.95%
<b>United States</b>	42,835,169	47.27%	48,016,540	30.62%

# Community Safety

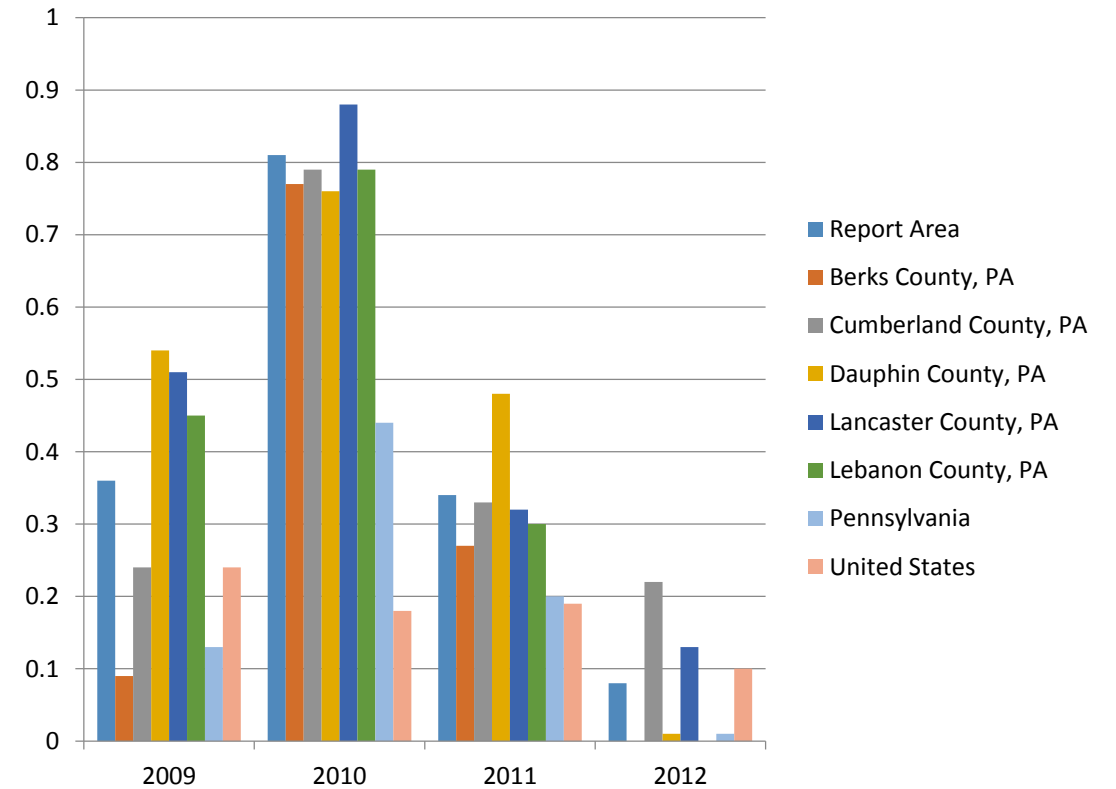
Total Crime Index, 2015				
	Total Crime Index	Rate Per 100,000 Population	Violent Crimes	Property Crimes
Report Area	29,022	1,813.92	3,676	25,346
Berks County, PA	8,300	2,004.90	1,282	7,018
Cumberland County, PA	3,361	1,362.10	205	3,156
Dauphin County, PA	6,460	2,373.60	981	5,479
Lancaster County, PA	8,607	1,604.40	967	7,640
Lebanon County, PA	2,294	1,674.70	241	2,053
Pennsylvania	272,880	2,131.50	40,186	232,694

Violent and Property Crimes, 2015								
	Violent Crimes				Property Crimes			
	Murder	Rape	Robbery	Aggravated Assault	Burglary	Larceny Theft	Motor Vehicle Theft	Arson
Berks County, PA	15	95	355	817	1452	5098	417	51
Cumberland County, PA	2	53	67	83	394	2686	46	30
Dauphin County, PA	18	126	285	552	1058	4176	194	51
Lancaster County, PA	16	228	274	449	1138	6233	242	27
Lebanon County, PA	4	24	39	174	334	1562	112	45
Pennsylvania	661	4266	12934	22325	39420	179397	12061	1816

# Air Quality

Percentage of (Pop. Adjusted) Days Exceeding NAAQ Standards: Particulate Matter (PM2.5), 2009 through 2012				
	2009	2010	2011	2012
Report Area	0.36	0.81	0.34	0.08
Berks County, PA	0.09	0.77	0.27	0
Cumberland County, PA	0.24	0.79	0.33	0.22
Dauphin County, PA	0.54	0.76	0.48	0.01
Lancaster County, PA	0.51	0.88	0.32	0.13
Lebanon County, PA	0.45	0.79	0.3	0
Pennsylvania	0.13	0.44	0.2	0.01
United States	0.24	0.18	0.19	0.1

**Percentage of Days Exceeding NAAQ Standards: Particulate Matter (PM2.5)**



# Community Need Index (CNI)

Berks, Cumberland, Dauphin, Lancaster & Lebanon Counties

# CNI Score

## 1. Income Barrier

- % of households below poverty line, with head of household age 65 or more
- % of families with children under 18 below poverty line
- % of single female-headed families with children under 18 below poverty line

## 2. Cultural Barrier

- % of population that is minority
- % of population that speaks English poorly

## 3. Education Barrier

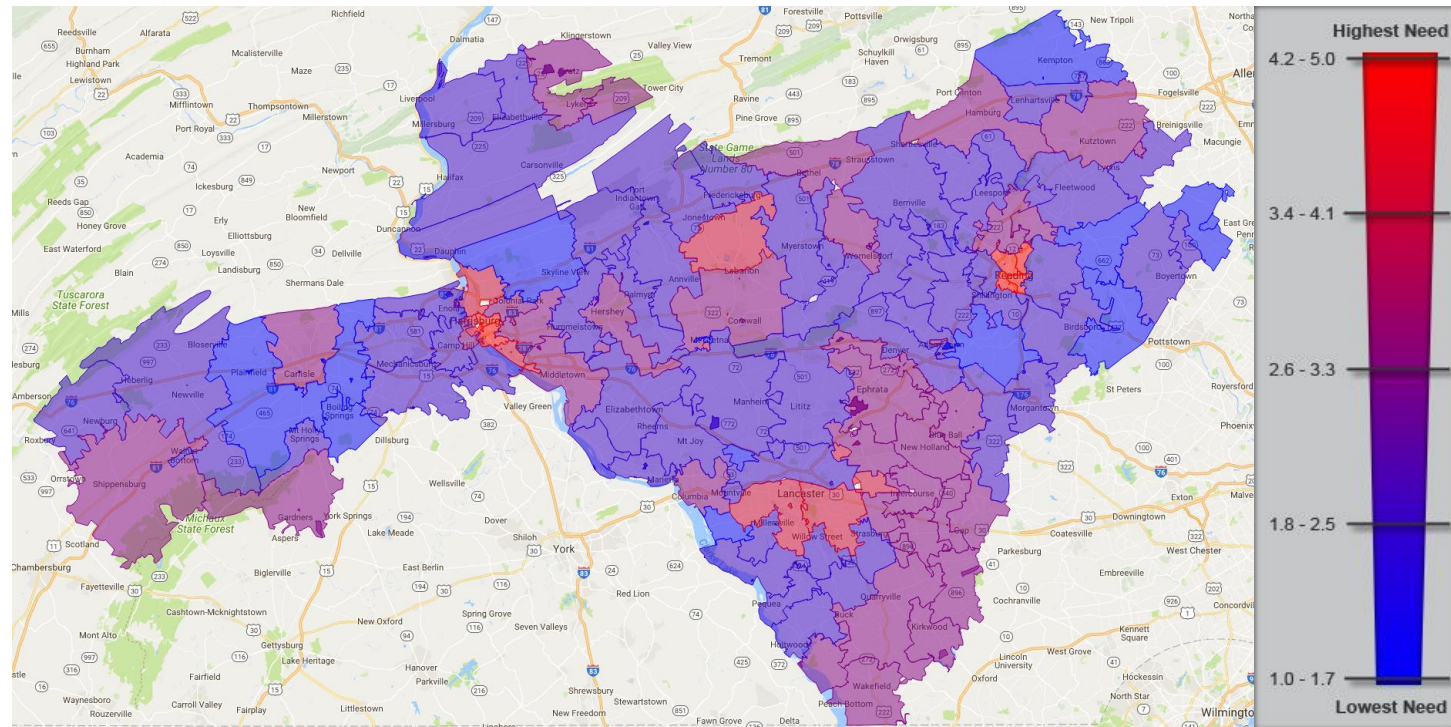
- % of population without a high school diploma

## 4. Insurance Barrier

- % of population without employment
- % of population without health insurance

## 5. Housing Barrier

- % of households renting their home





# Highest CNI Scores for Five County Region (Highest level of socioeconomic barriers)

	Zip Code	CNI Score	Population	City	County
■	19602	5	18062	Reading	Berks
■	19601	4.8	32683	Reading	Berks
■	19604	4.8	27642	Reading	Berks
■	17101	4.8	2297	Harrisburg	Dauphin
■	17104	4.8	21696	Harrisburg	Dauphin
■	19611	4.4	10731	Reading	Berks
■	17103	4.4	12055	Harrisburg	Dauphin
■	17602	4	54002	Lancaster	Lancaster
■	17046	4	30470	Sand Hill	Lebanon
■	17603	3.8	64870	Lancaster	Lancaster
■	17034	3.8	2207	Highspire	Dauphin
■	17102	3.8	7939	Harrisburg	Dauphin
■	17113	3.6	11402	Harrisburg	Dauphin
■	17505	3.4	1832	Bird In Hand	Lancaster
■	17110	3.4	25902	Harrisburg	Dauphin

Speaks English Poorly	No High School Diploma	Living in Poverty	No Health Insurance	Renter
44%	35%	42%	18%	64%
50%	36%	42%	17%	65%
46%	35%	35%	19%	49%
34%	22%	35%	8%	96%
49%	26%	37%	17%	59%
42%	16%	30%	8%	50%
66%	17%	28%	16%	57%
39%	20%	22%	12%	49%
44%	21%	18%	12%	39%
43%	15%	18%	9%	43%
53%	13%	12%	12%	50%
39%	12%	23%	16%	69%
32%	12%	19%	9%	40%
17%	47%	14%	54%	35%
42%	11%	14%	8%	37%

# Lowest CNI Scores for the Five County Region (Lowest level of socioeconomic barriers)

	Zip Code	CNI Score	Population	City	County	Speaks English Poorly	No High School Diploma	Living In Poverty	No Health Insurance	Renter
■	17064	1.6	327	Mount Gretna	Lebanon	<0.5%	5%	5%	4%	19%
■	17582	1.6	2071	Washington Boro	Lancaster	25%	8%	1%	3%	10%
■	19540	1.6	11752	Mohnton	Berks	47%	8%	8%	3%	15%
■	19547	1.6	4279	Oley	Berks	16%	6%	5%	6%	20%
■	18056	1.6	643	Hereford	Berks	41%	15%	6%	28%	3%
■	17015	1.6	23303	Carlisle	Cumberland	46%	5%	5%	5%	12%
■	17112	1.6	34796	Harrisburg	Dauphin	29%	6%	5%	4%	19%
■	17538	1.4	5881	Landisville	Lancaster	12%	2%	3%	5%	13%
■	19518	1.4	14775	Douglassville	Berks	34%	8%	5%	5%	17%
■	19503	1.4	1156	Bally	Berks	23%	11%	13%	4%	23%
■	19504	1.4	4903	Barto	Berks	19%	5%	7%	4%	11%
■	19529	1.4	3140	Kempton	Berks	15%	10%	7%	6%	18%
■	17007	1.2	5500	Boiling Springs	Cumberland	12%	3%	2%	3%	12%

# Public Health Data Analysis

Berks, Cumberland, Dauphin, Lancaster & Lebanon Counties

# County Health Rankings

	Health Factors Rank (out of 67 counties)			Health Outcomes Rank (out of 67 counties)		
	2016	2017	2018	2016	2017	2018
<b>Berks</b>	27	33	29	25	24	32
<b>Cumberland</b>	4	4	4	5	5	6
<b>Dauphin</b>	26	28	26	51	39	43
<b>Lancaster</b>	9	9	10	9	10	8
<b>Lebanon</b>	10	12	9	16	19	15

# Health Outcomes - Quality of Life

Percentage of Adults Reporting Fair or Poor Health (Age-Adjusted), 2016	
	2016
Berks County, PA	16%
Cumberland County, PA	13%
Dauphin County, PA	15%
Lancaster County, PA	13%
Lebanon County, PA	13%
Pennsylvania	15%

Average Number of <b>Physically</b> Unhealthy Days Reported in Past 30 Days (Age-Adjusted)	
	2016
Berks County, PA	3.8
Cumberland County, PA	3.4
Dauphin County, PA	3.5
Lancaster County, PA	3.5
Lebanon County, PA	3.3
Pennsylvania	3.9

Average Number of <b>Mentally</b> Unhealthy Days Reported in Past 30 Days (Age-Adjusted)	
	2016
Berks County, PA	4.2
Cumberland County, PA	3.7
Dauphin County, PA	4.1
Lancaster County, PA	3.9
Lebanon County, PA	3.8
Pennsylvania	4.3

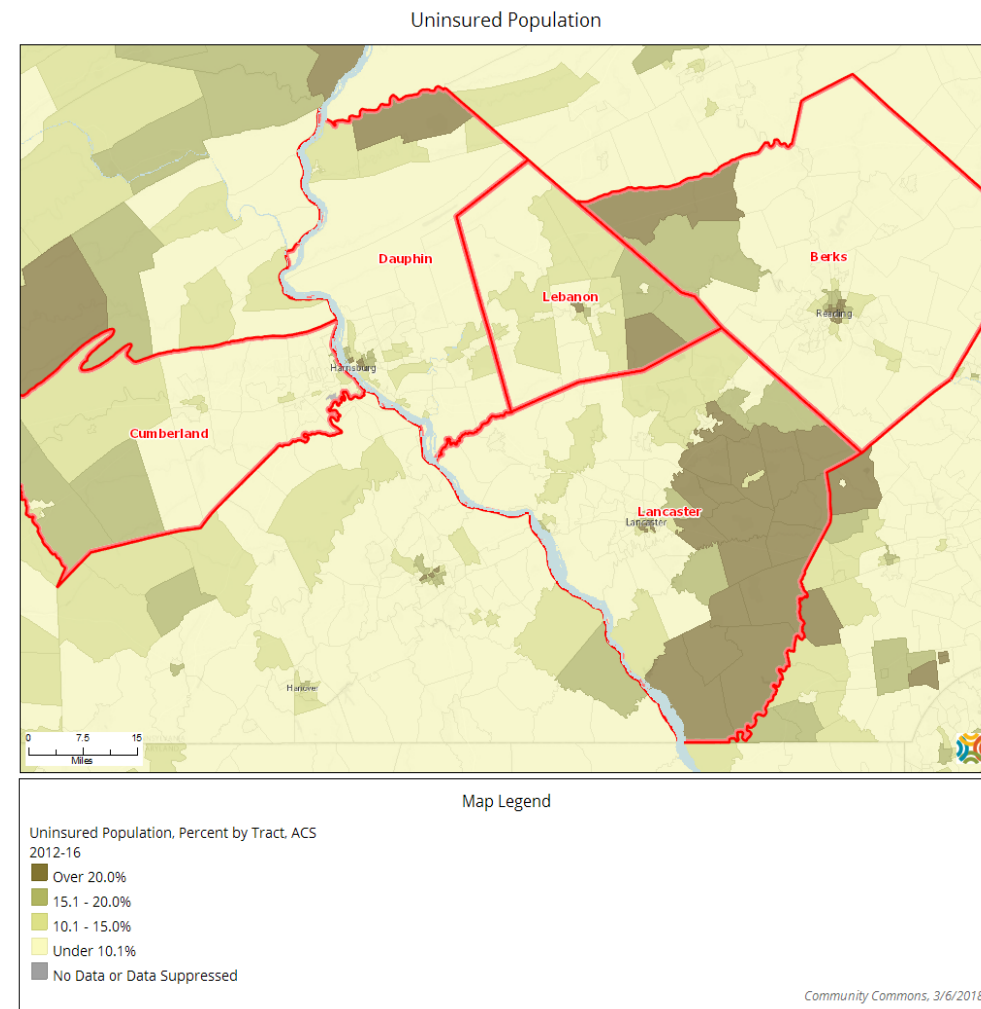
# Access to Clinical Care

Berks, Cumberland, Dauphin, Lancaster & Lebanon Counties

# Uninsured Population

Report Area	Total Population (For Whom Insurance Status is Determined)	Total Uninsured Population	Percent Uninsured Population
Report Area	1,576,852	151,281	9.59%
Berks County, PA	409,330	34,994	8.55%
Cumberland County, PA	237,370	15,051	6.34%
Dauphin County, PA	268,502	21,822	8.13%
Lancaster County, PA	526,391	64,826	12.32%
Lebanon County, PA	135,259	14,588	10.79%
Pennsylvania	12,579,598	1,000,216	7.95%
United States	313,576,137	36,700,246	11.70%

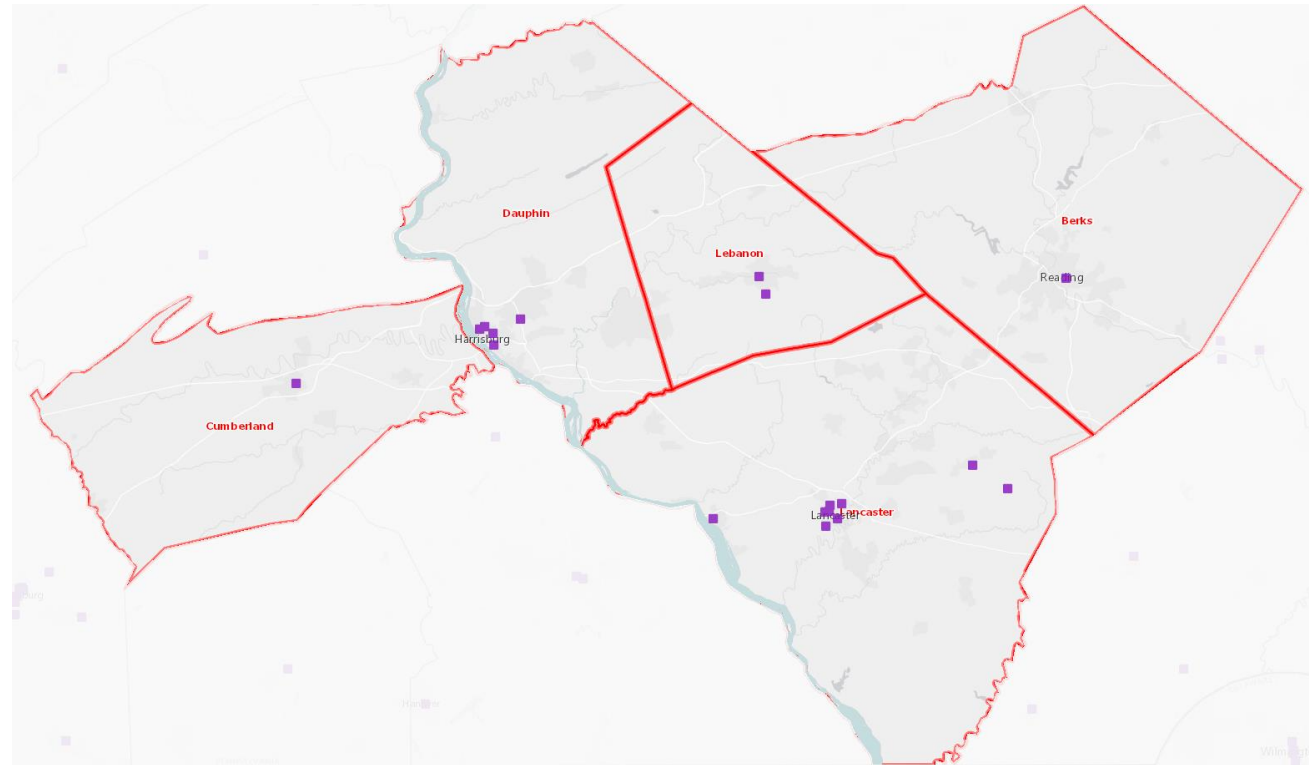
Report Area	No Health Insurance		
	Under Age 18	Age 18 - 64	Age 65 +
Report Area	9.35%	11.92%	1.01%
Berks County, PA	5.56%	11.69%	0.52%
Cumberland County, PA	5.36%	8.22%	0.58%
Dauphin County, PA	4.55%	11.26%	0.54%
Lancaster County, PA	15.66%	13.67%	1.99%
Lebanon County, PA	10.58%	13.95%	0.40%
Pennsylvania	4.82%	10.99%	0.49%
United States	5.90%	16.37%	0.91%



# Federally Qualified Health Centers

Federally Qualified Health Centers, POS March 2018	
Report Area	Number of Federally Qualified Health Centers
Report Area	18
Berks County, PA	1
Cumberland County, PA	1
Dauphin County, PA	5
Lancaster County, PA	9
Lebanon County, PA	2
Pennsylvania	256
United States	8,329

Federally Qualified Health Centers, 2018

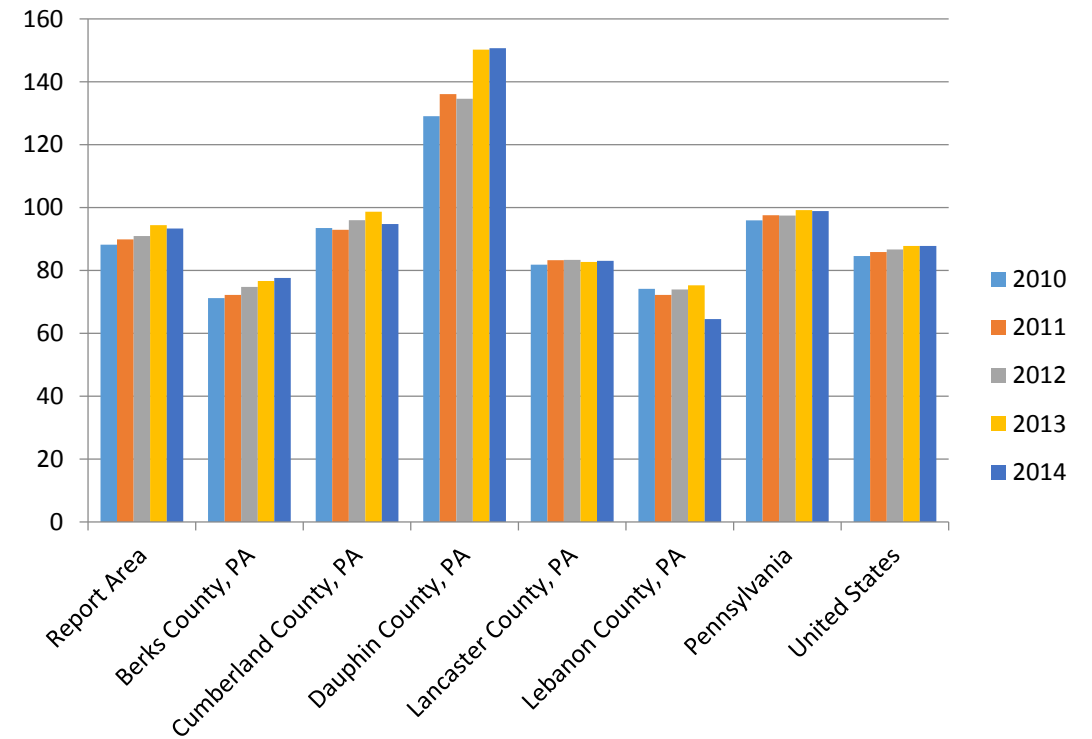




# Access to Primary Care

Access to Primary Care, Rate (Per 100,000 Pop.), 2010-2014					
	2010	2011	2012	2013	2014
Report Area	88.2	89.89	90.92	94.42	93.33
Berks County, PA	71.21	72.19	74.73	76.66	77.59
Cumberland County, PA	93.46	92.9	95.97	98.67	94.76
Dauphin County, PA	129.06	136.07	134.61	150.22	150.67
Lancaster County, PA	81.82	83.27	83.33	82.7	83.06
Lebanon County, PA	74.12	72.22	73.94	75.28	64.54
Pennsylvania	95.95	97.53	97.46	99.17	98.87
United States	84.57	85.83	86.66	87.76	87.77

Primary Care Physicians per 100,000 Population

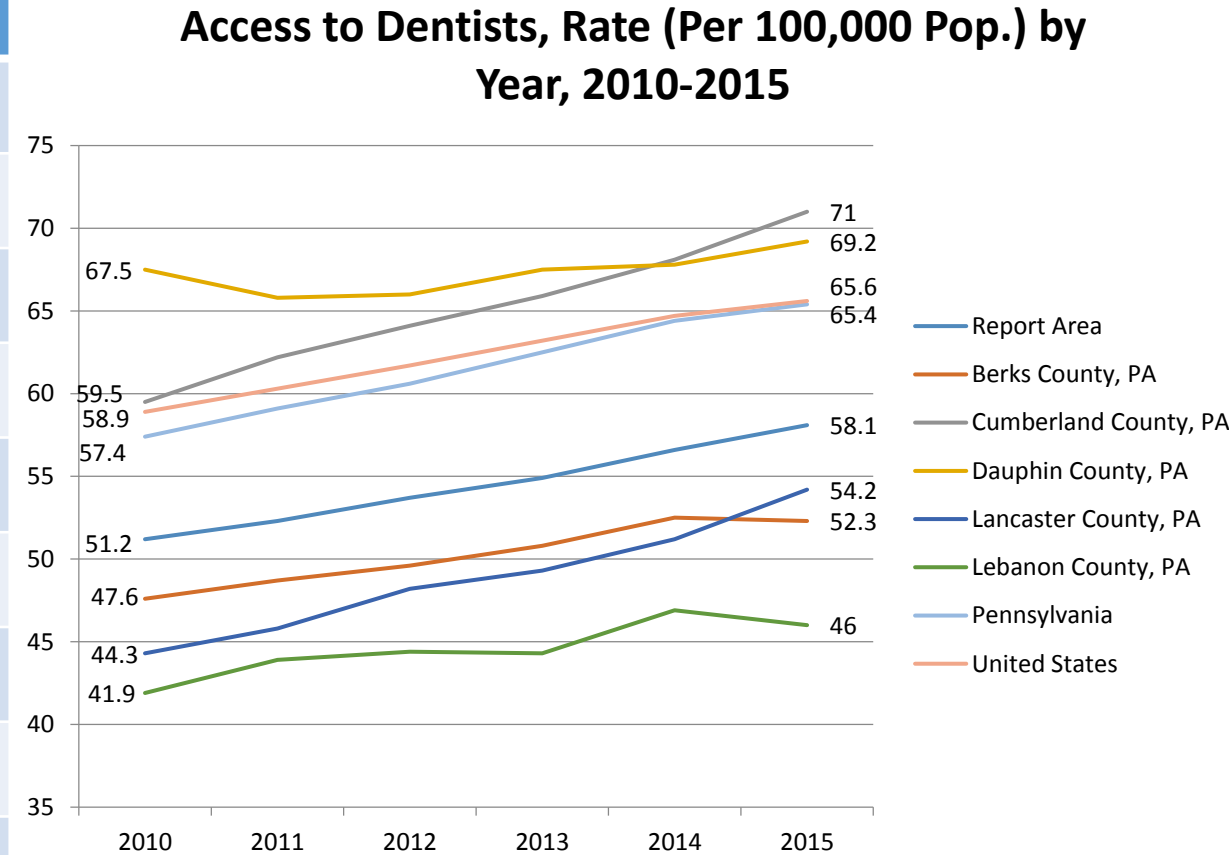


# Access to Mental Health

Access to Mental Health Care Provider, 2017				
	Estimated Population	Number of Mental Health Providers	Ratio of Mental Health Providers to Population (1 Provider per x Persons)	Mental Health Care Provider Rate (Per 100,000 Population)
<b>Report Area</b>	1,598,570	2,379	672	148.8
<b>Berks County, PA</b>	413,677	490	844.2	<b>118.4</b>
<b>Cumberland County, PA</b>	243,767	440	554	180.5
<b>Dauphin County, PA</b>	271,456	532	510.3	195.9
<b>Lancaster County, PA</b>	533,310	610	874.3	<b>114.3</b>
<b>Lebanon County, PA</b>	136,360	307	444.2	225.1
<b>Pennsylvania</b>	12,782,379	21,927	583	171.5
<b>United States</b>	317,105,555	643,219	493	202.8

# Access to Dentists

Access to Dentists, Rate (Per 100,000 Pop.) by Year, 2010-2015						
	2010	2011	2012	2013	2014	2015
Report Area	51.2	52.3	53.7	54.9	56.6	58.1
Berks County, PA	47.6	48.7	49.6	50.8	52.5	52.3
Cumberland County, PA	59.5	62.2	64.1	65.9	68.1	71
Dauphin County, PA	67.5	65.8	66	67.5	67.8	69.2
Lancaster County, PA	44.3	45.8	48.2	49.3	51.2	54.2
Lebanon County, PA	41.9	43.9	44.4	44.3	46.9	46
Pennsylvania	57.4	59.1	60.6	62.5	64.4	65.4
United States	58.9	60.3	61.7	63.2	64.7	65.6



# Health Behaviors/Risk Factors and Health Outcomes

Berks, Cumberland, Dauphin, Lancaster & Lebanon Counties

# Mental Health (6,8,10, and 12th Grades)

	Bullied through texting or social media*			Felt depressed or sad MOST days*			Considered Suicide*		
	2013	2015	2017	2013	2015	2017	2013	2015	2017
Berks County, PA	14.8%	15.6%	15.1%	39.1%	42.9%	41.5%	18.7%	17.2%	16.9%
Cumberland County, PA	14.5%	15.4%	17.7%	31.2%	33.3%	37.6%	15.6%	14.1%	16.8%
Dauphin County, PA	12.5%	14.0%	15.9%	32.1%	38.2%	37.7%	14.6%	16.1%	17.1%
Lancaster County, PA	12.7%	14.2%	15.3%	31.6%	35.7%	35.7%	16.3%	16.1%	15.7%
Lebanon County, PA	13.6%	14.6%	16.8%	35.0%	38.5%	40.2%	14.7%	14.7%	18.8%
Pennsylvania	13.7%	16.3%	16.5%	31.7%	38.3%	38.1%	15.6%	16.0%	16.5%

\*In the past 12 months

# Drug, Alcohol, and Tobacco 30-Day Use (6,8,10, and 12th Grades)

Early initiation and higher prevalence drugs – 30-day use						
	Alcohol			Marijuana		
	2013	2015	2017	2013	2015	2017
Berks County, PA	20.7%	21.0%	17.7%	11.7%	10.3%	10.5%
Cumberland County, PA	17.1%	14.8%	15.5%	8.7%	7.0%	7.1%
Dauphin County, PA	16.0%	15.6%	14.0%	9.8%	10.5%	8.1%
Lancaster County, PA	15.0%	13.7%	12.2%	7.7%	7.4%	6.7%
Lebanon County, PA	16.7%	12.9%	15.4%	10.9%	7.5%	9.2%
Pennsylvania	20.3%	18.2%	17.9%	10.3%	9.4%	9.7%

Tobacco and Vaping - 30-day use						
	Cigarettes			Vaping		
	2013	2015	2017	2013	2015	2017
Berks County, PA	7.1%	5.0%	3.4%	n/a	16.6%	14.6%
Cumberland County, PA	6.8%	5.1%	4.4%	n/a	12.9%	14.2%
Dauphin County, PA	5.8%	5.2%	3.9%	n/a	13.4%	12.7%
Lancaster County, PA	6.4%	5.1%	3.3%	n/a	13.6%	10.9%
Lebanon County, PA	6.1%	3.6%	4.7%	n/a	14.2%	16.5%
Pennsylvania	8.0%	6.4%	5.6%	n/a	15.5%	16.3%

# Prescription & Over-The-Counter Drugs (6,8,10, and 12th Grades)

Prescription and over-the-counter drugs and medications - 30-day use (6,8,10, and 12th Grades)															
	PEDs & Steroids			Narcotic Rx Drugs			Rx Tranquilizers			Rx Stimulants			Used OTC Drugs to Get High		
	2013	2015	2017	2013	2015	2017	2013	2015	2017	2013	2015	2017	2013	2015	2017
<b>Berks County, PA</b>	0.4%	0.4%	0.2%	2.6%	1.9%	1.5%	0.8%	0.6%	0.8%	1.1%	1.0%	0.5%	n/a	1.3%	1.4%
<b>Cumberland County, PA</b>	0.5%	0.3%	0.2%	2.6%	1.6%	1.4%	0.8%	0.4%	0.6%	1.6%	1.5%	0.9%	n/a	1.1%	1.2%
<b>Dauphin County, PA</b>	0.3%	0.5%	0.3%	2.1%	2.3%	1.6%	0.5%	1.0%	0.6%	1.0%	1.5%	1.0%	n/a	1.3%	1.4%
<b>Lancaster County, PA</b>	0.2%	0.2%	0.2%	2.1%	1.8%	1.2%	0.7%	0.6%	0.5%	1.2%	0.9%	0.7%	n/a	1.2%	1.0%
<b>Lebanon County, PA</b>	0.2%	0.3%	0.5%	2.4%	2.1%	2.0%	0.3%	0.7%	0.9%	1.2%	0.7%	0.9%	n/a	0.9%	1.8%
<b>Pennsylvania</b>	0.4%	0.3%	0.3%	2.1%	1.9%	1.3%	0.7%	0.7%	0.7%	1.1%	1.3%	0.8%	n/a	1.4%	1.3%

PEDs = Performance Enhancing Drugs

Rx = Prescription

OTC = Over-the-Counter

# Prescription Drugs (6,8,10, and 12th Grades)

Access to prescription drugs  
(6,8,10, and 12th Grades)

	Ease of Access to Rx Pain Drugs		
	2013	2015	2017
Berks County, PA	25.5%	27.5%	24.9%
Cumberland County, PA	26.1%	26.8%	27.1%
Dauphin County, PA	24.7%	28.7%	25.9%
Lancaster County, PA	26.5%	26.2%	24.2%
Lebanon County, PA	24.4%	22.0%	26.1%
Pennsylvania	24.3%	27.8%	25.5%

Sources of prescription drugs (6,8,10, and 12th Grades)  
(Reported by students indicating medically unapproved prescription drug use in past 12 months)

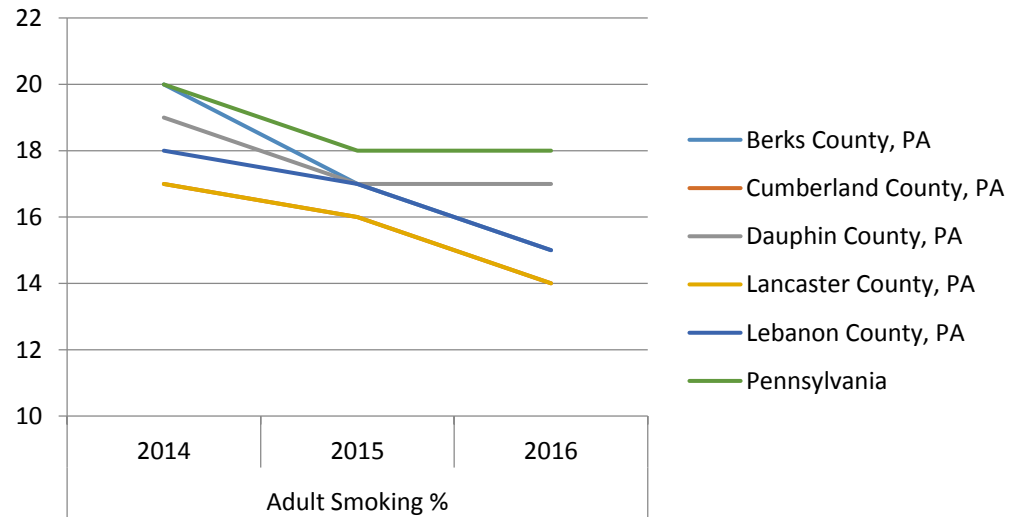
	2017	2017	2017	2017	2017	2017
	Took From Family Member In Home	Took From Relative Not In Home	Took From Person Not Related	Given By Friend Or Family Member	Bought From Someone	Ordered Over The Internet
Berks County, PA	39.3%	8.8%	11.9%	34.9%	24.4%	7.8%
Cumberland County, PA	38.4%	9.3%	12.7%	46.6%	28.7%	4.1%
Dauphin County, PA	42.7%	9.0%	11.8%	32.2%	21.6%	8.6%
Lancaster County, PA	44.6%	11.6%	10.5%	36.3%	24.1%	10.0%
Lebanon County, PA	43.8%	13.9%	14.6%	42.3%	25.5%	4.4%
Pennsylvania	39.1%	10.0%	10.6%	40.6%	27.3%	8.4%



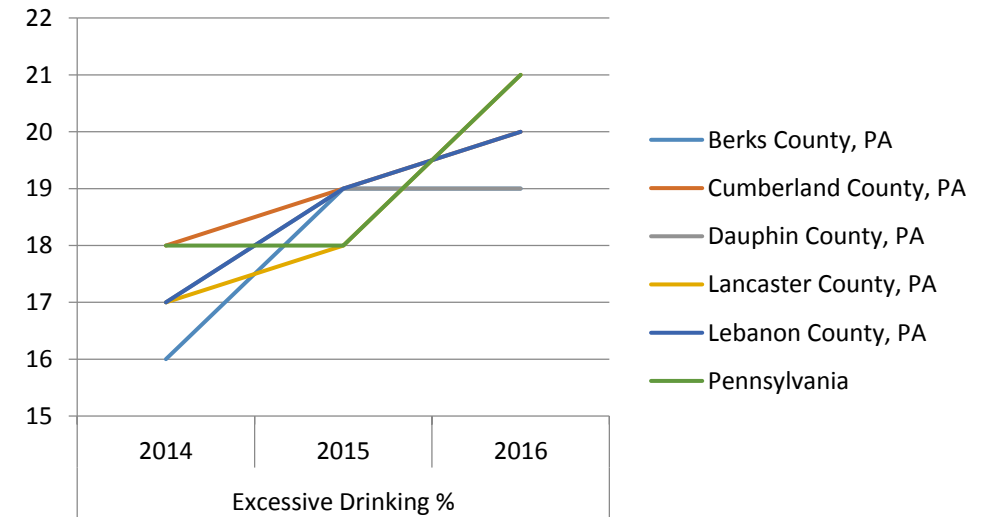
# Adult Smoking & Drinking

Adult Smoking and Drinking, 2014-2016						
	Current Smoker %			Excessive Drinking %		
	2014	2015	2016	2014	2015	2016
Berks County, PA	20	17	15	16	19	19
Cumberland County, PA	17	16	14	18	19	20
Dauphin County, PA	19	17	17	17	19	19
Lancaster County, PA	17	16	14	17	18	21
Lebanon County, PA	18	17	15	17	19	20
Pennsylvania	20	18	18	18	18	21

Current smokers

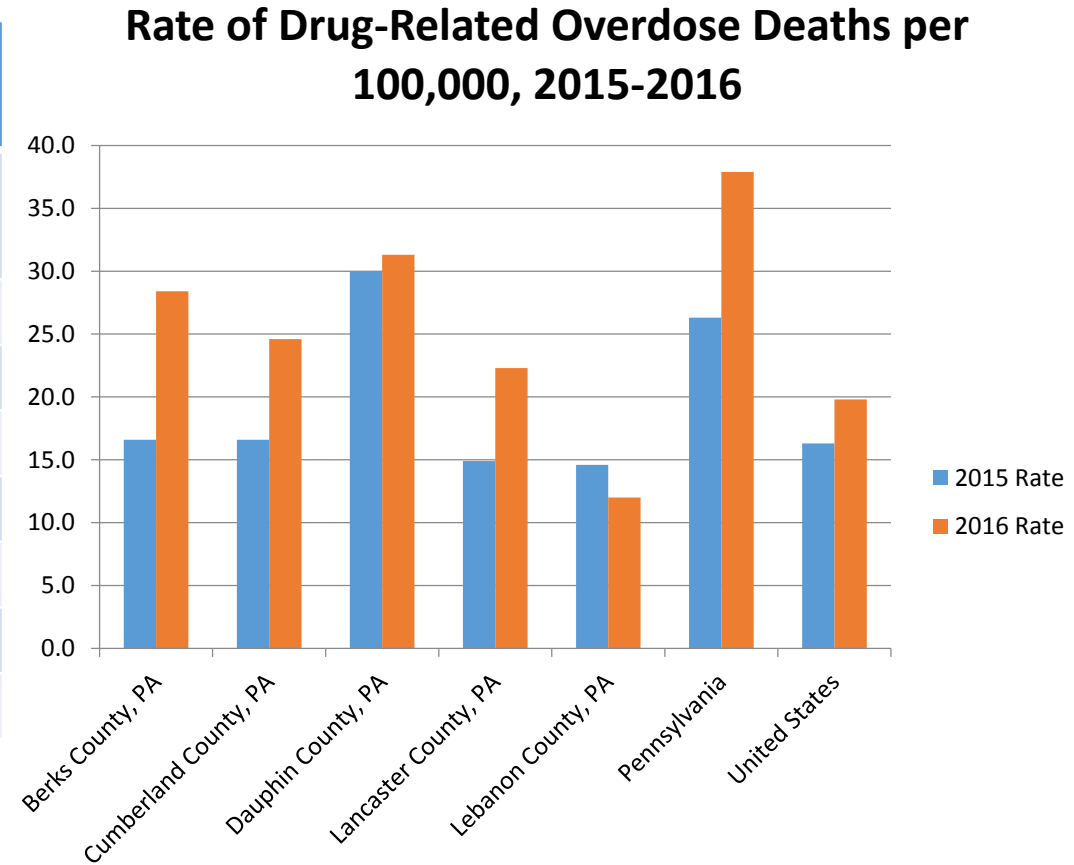


Binge or heavy drinking



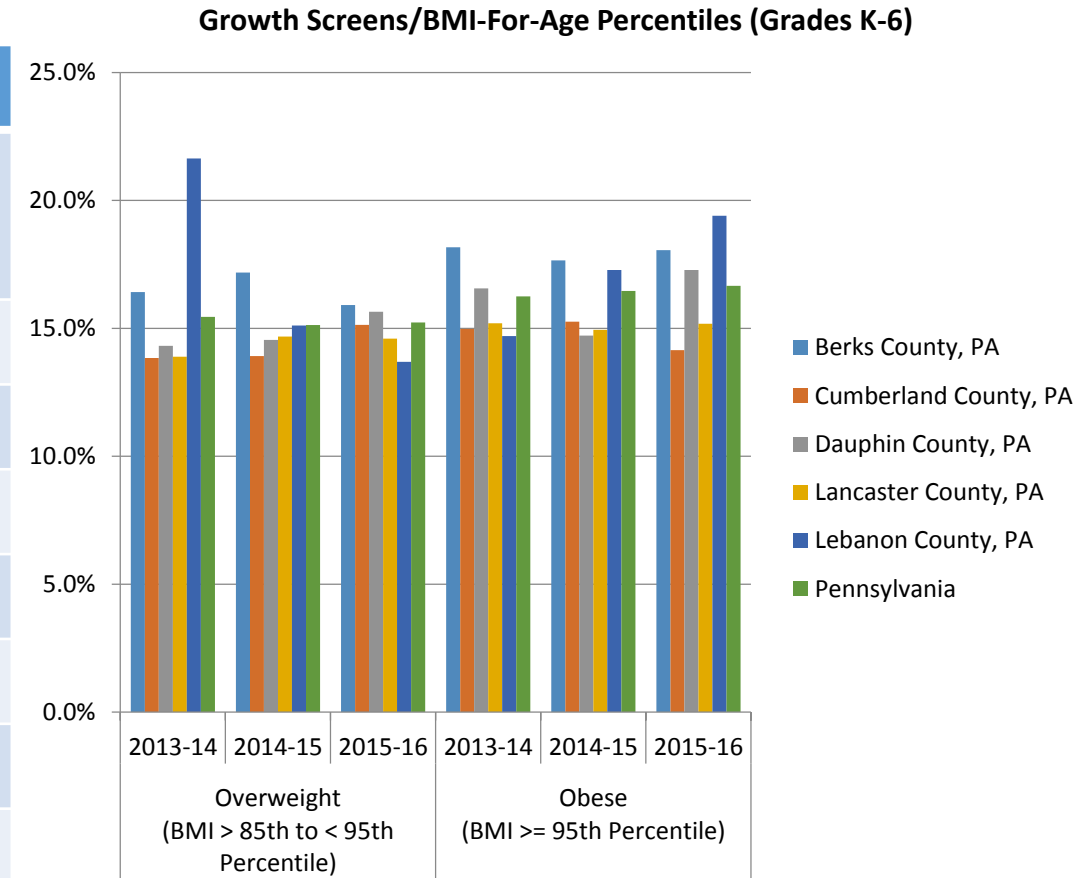
# Drug-Related Overdose Deaths

Rank and Rate of Drug-Related Overdose Deaths						
	2015 Count	2015 Rate	2015 Rank	2016 Count	2016 Rate	2016 Rank
Berks County, PA	69	16.6	43	117	28.4	28
Cumberland County, PA	41	16.6	39	58	24.6	40
Dauphin County, PA	82	30.0	16	84	31.3	23
Lancaster County, PA	80	14.9	47	116	22.3	43
Lebanon County, PA	20	14.6	48	16	12.0	61
Pennsylvania	3,264	26.7	n/a	4,642	36.5	n/a
United States	52,898	16.3	n/a	63,600	19.8	n/a



# Body Mass Index (BMI) Grades K-6

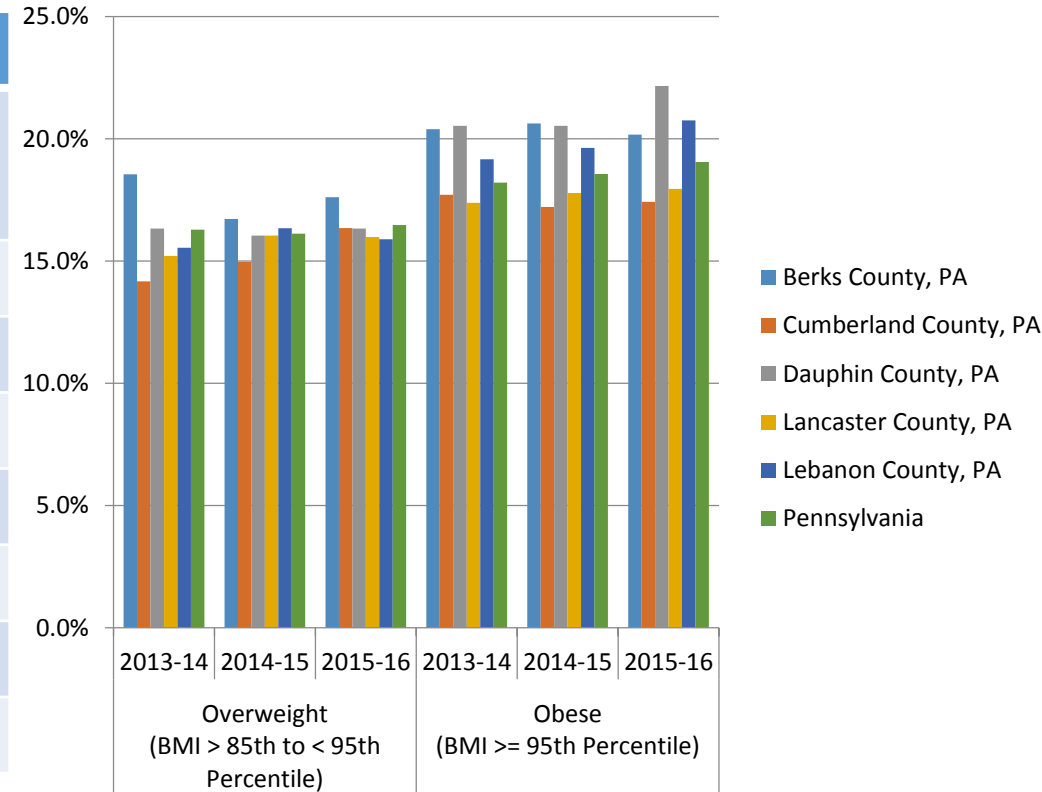
	Grades K-6					
	Overweight (BMI > 85th to < 95th Percentile)			Obese (BMI >= 95th Percentile)		
	2013-14	2014-15	2015-16	2013-14	2014-15	2015-16
<b>Berks County, PA</b>	16.4%	17.2%	15.9%	18.2%	17.7%	18.1%
<b>Cumberland County, PA</b>	13.8%	13.9%	15.1%	15.0%	15.3%	14.2%
<b>Dauphin County, PA</b>	14.3%	14.6%	15.7%	16.6%	14.7%	17.3%
<b>Lancaster County, PA</b>	13.9%	14.7%	14.6%	15.2%	14.9%	15.2%
<b>Lebanon County, PA</b>	21.6%	15.1%	13.7%	14.7%	17.3%	19.4%
<b>Pennsylvania</b>	15.5%	15.1%	15.2%	16.3%	16.5%	16.7%



# BMI Grades 7-12

Growth Screens/BMI-For-Age Percentiles (Grades 7-12)

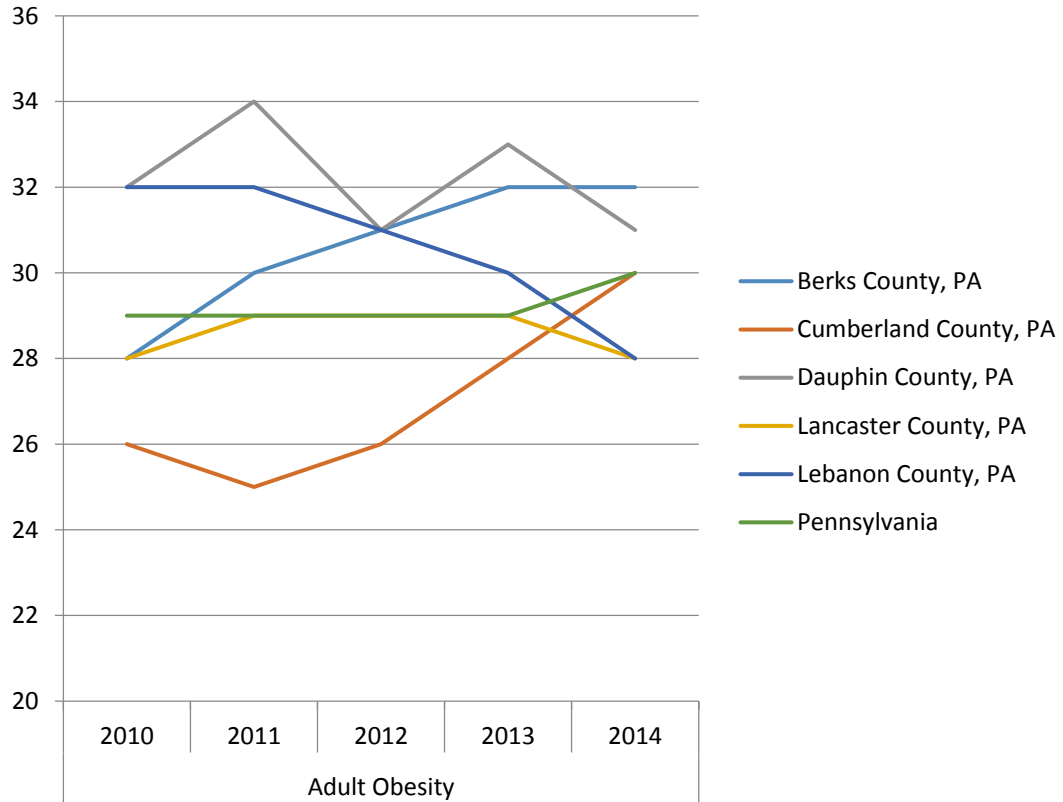
	Grades 7-12					
	Overweight (BMI > 85th to < 95th Percentile)			Obese (BMI >= 95th Percentile)		
	2013-14	2014-15	2015-16	2013-14	2014-15	2015-16
Berks County, PA	18.6%	16.7%	17.6%	20.4%	20.6%	20.2%
Cumberland County, PA	14.2%	15.0%	16.4%	17.7%	17.2%	17.4%
Dauphin County, PA	16.3%	16.0%	16.3%	20.5%	20.5%	22.2%
Lancaster County, PA	15.2%	16.0%	16.0%	17.4%	17.8%	18.0%
Lebanon County, PA	15.5%	16.3%	15.9%	19.2%	19.6%	20.8%
Pennsylvania	16.3%	16.1%	16.5%	18.2%	18.6%	19.1%



# Adult Obesity

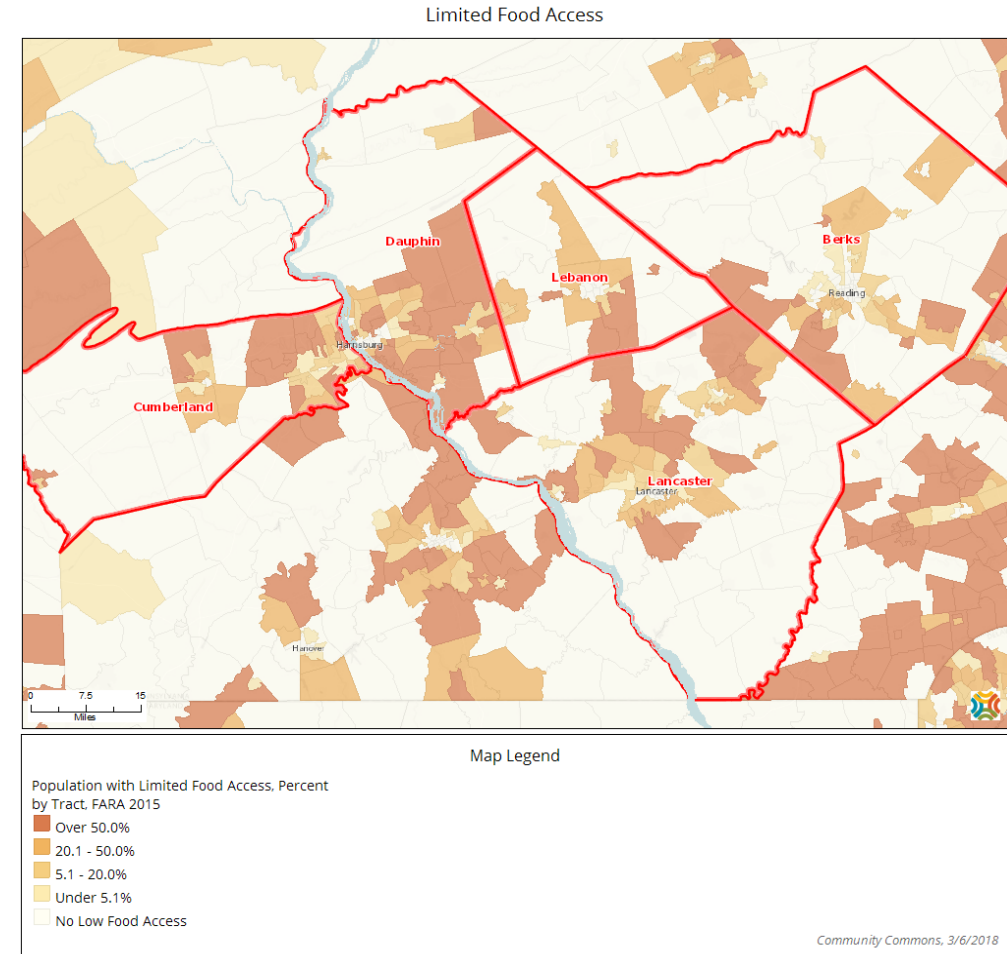
Percentage of adults that report a BMI of 30 or more					
	Adult Obesity				
	2010	2011	2012	2013	2014
Berks County, PA	28%	30%	31%	32%	32%
Cumberland County, PA	26%	25%	26%	28%	30%
Dauphin County, PA	32%	34%	31%	33%	31%
Lancaster County, PA	28%	29%	29%	29%	28%
Lebanon County, PA	32%	32%	31%	30%	28%
Pennsylvania	29%	29%	29%	29%	30%

Percentage of Obese Adults



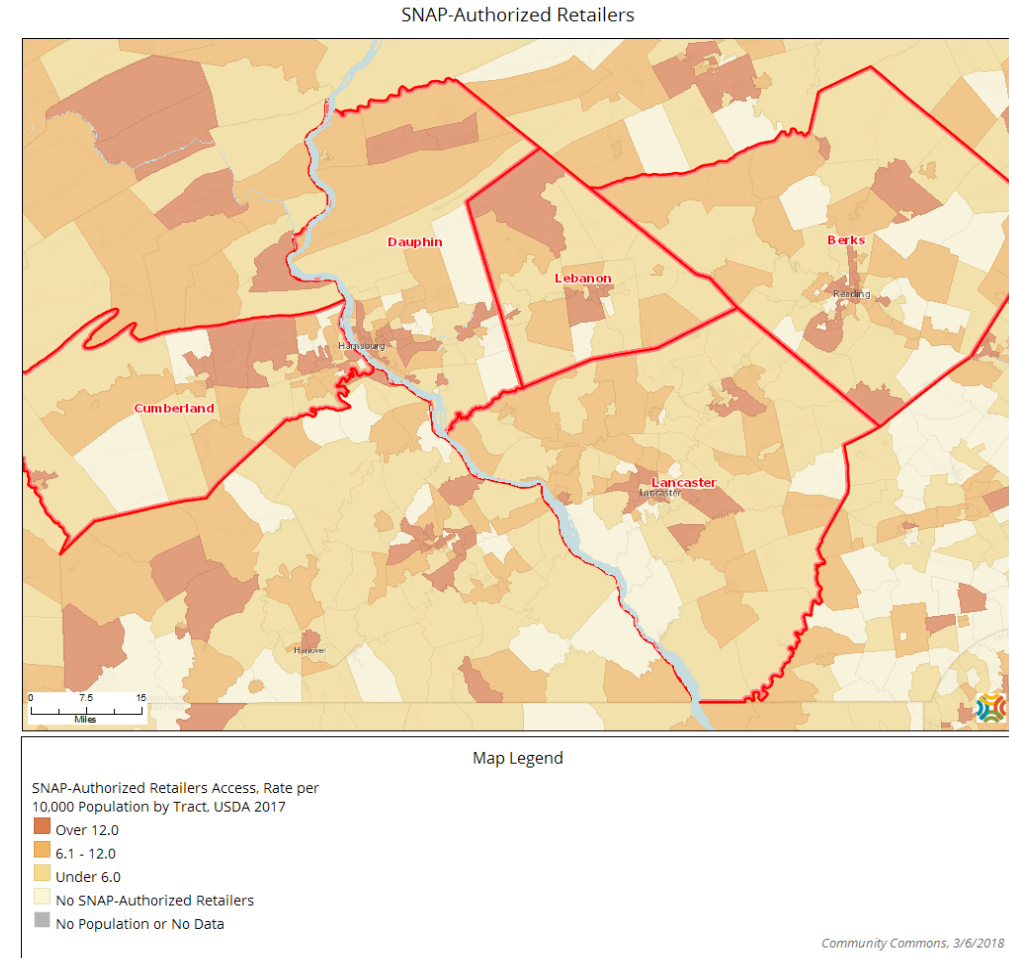
# Food Access

Low Food Access, 2015			
	Total Population	Population with Low Food Access	Percent Population with Low Food Access
Report Area	1,567,961	357,982	22.83%
Berks County, PA	411,442	71,305	17.33%
Cumberland County, PA	235,406	63,285	26.88%
Dauphin County, PA	268,100	101,022	37.68%
Lancaster County, PA	519,445	98,702	19%
Lebanon County, PA	133,568	23,668	17.72%
Pennsylvania	12,702,379	2,682,905	21.12%
United States	308,745,538	69,266,771	22.43%



# SNAP-Authorized Retailers

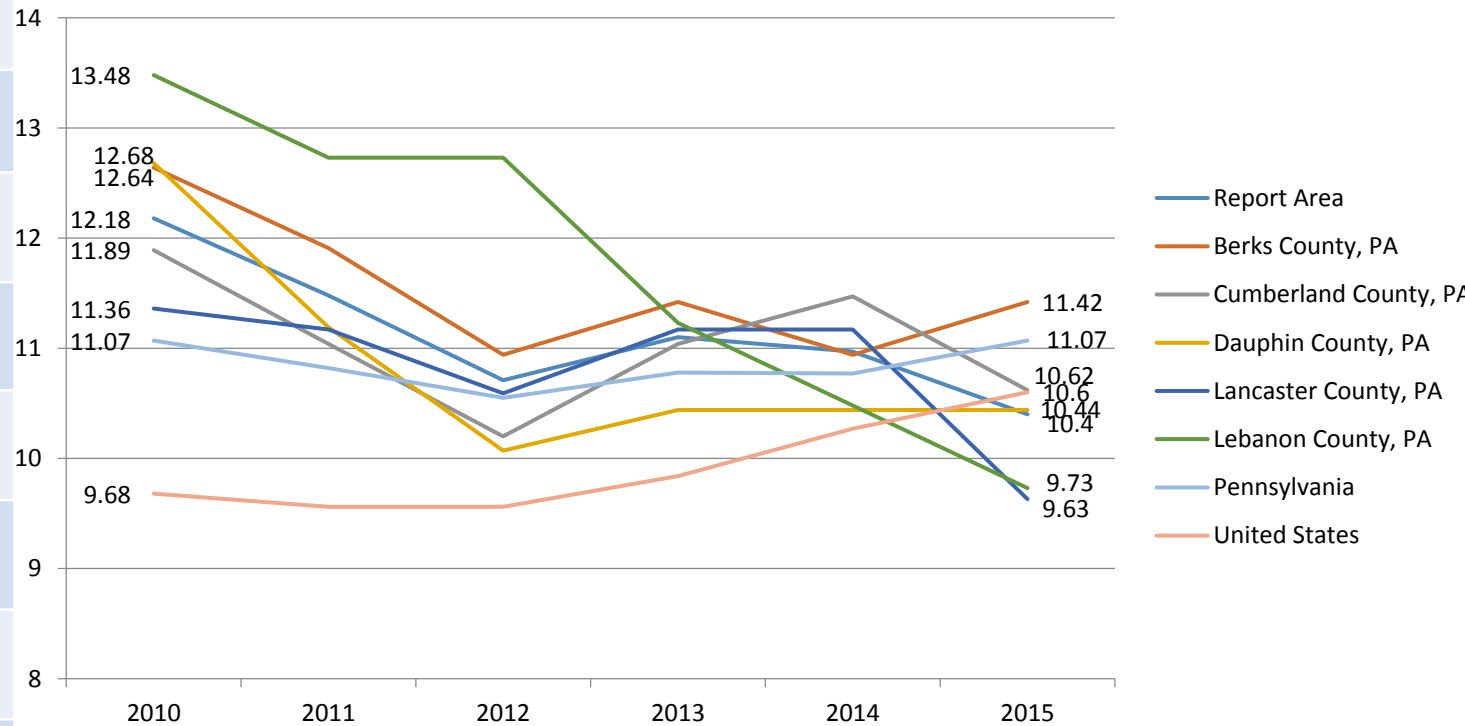
SNAP-Authorized Retailers, 2017			
Report Area	Total Population	Total SNAP-Authorized Retailers	SNAP-Authorized Retailers, Rate per 10,000 Population
Report Area	1,567,961	1,235	7.88
Berks County, PA	411,442	357	8.68
Cumberland County, PA	235,406	164	6.97
Dauphin County, PA	268,100	264	9.85
Lancaster County, PA	519,445	350	6.74
Lebanon County, PA	133,568	100	7.49
Pennsylvania	12,702,379	10,257	8.07
United States	312,411,142	257,596	8.25



# Recreation & Fitness Facilities

Recreation and Fitness Facilities Rate per 100,000 Population						
	2010	2011	2012	2013	2014	2015
Report Area	12.18	11.48	10.71	11.1	10.97	10.4
Berks County, PA	12.64	11.91	10.94	11.42	10.94	11.42
Cumberland County, PA	11.89	11.04	10.2	11.04	11.47	10.62
Dauphin County, PA	12.68	11.19	10.07	10.44	10.44	10.44
Lancaster County, PA	11.36	11.17	10.59	11.17	11.17	9.63
Lebanon County, PA	13.48	12.73	12.73	11.23	10.48	9.73
Pennsylvania	11.07	10.82	10.55	10.78	10.77	11.07
United States	9.68	9.56	9.56	9.84	10.27	10.6

Recreation and Fitness Facilities Rate per 100,000 Population



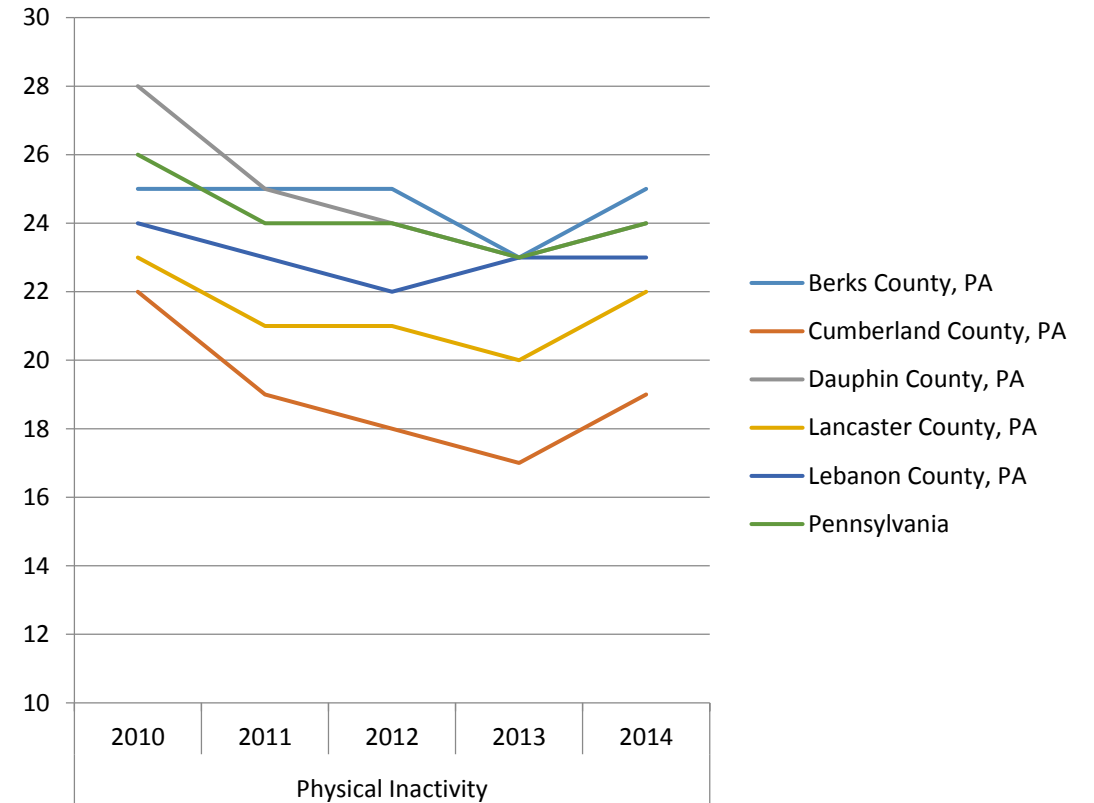


# Physically Inactive Adults

Percentage of adults age 20 and over reporting no leisure-time physical activity

	Physical Inactivity				
	2010	2011	2012	2013	2014
Berks County, PA	25	25	25	23	25
Cumberland County, PA	22	19	18	17	19
Dauphin County, PA	28	25	24	23	24
Lancaster County, PA	23	21	21	20	22
Lebanon County, PA	24	23	22	23	23
Pennsylvania	26	24	24	23	24

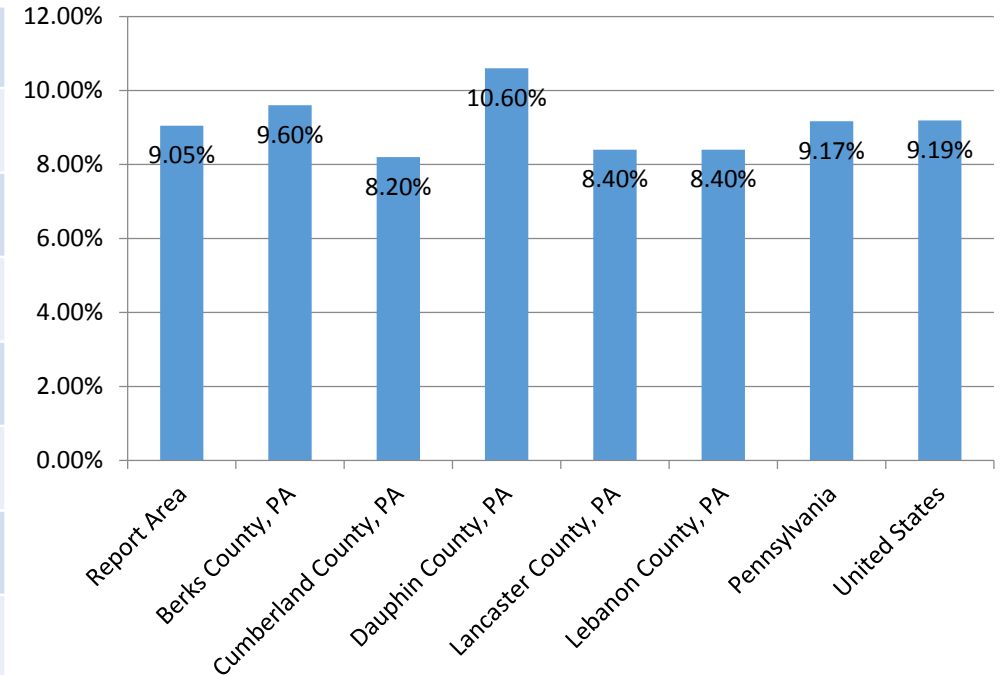
Percentage of Physically Inactive Adults



# Diabetes

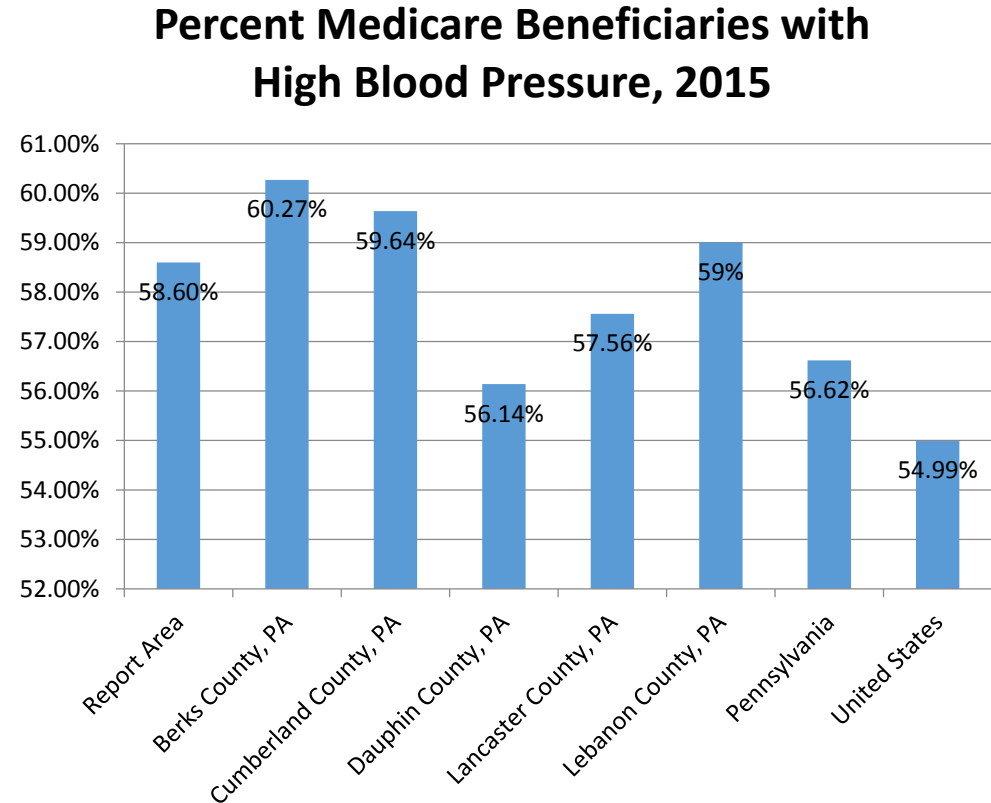
	Population with Diagnosed Diabetes	Population with Diagnosed Diabetes, Age-Adjusted Rate
Report Area	123,081	9.05%
Berks County, PA	33,736	9.60%
Cumberland County, PA	17,333	8.20%
Dauphin County, PA	24,313	10.60%
Lancaster County, PA	37,489	8.40%
Lebanon County, PA	10,210	8.40%
Pennsylvania	1,028,685	9.17%
United States	23,685,417	9.19%

**Population with Diagnosed Diabetes, Age-Adjusted Rate, 2013**



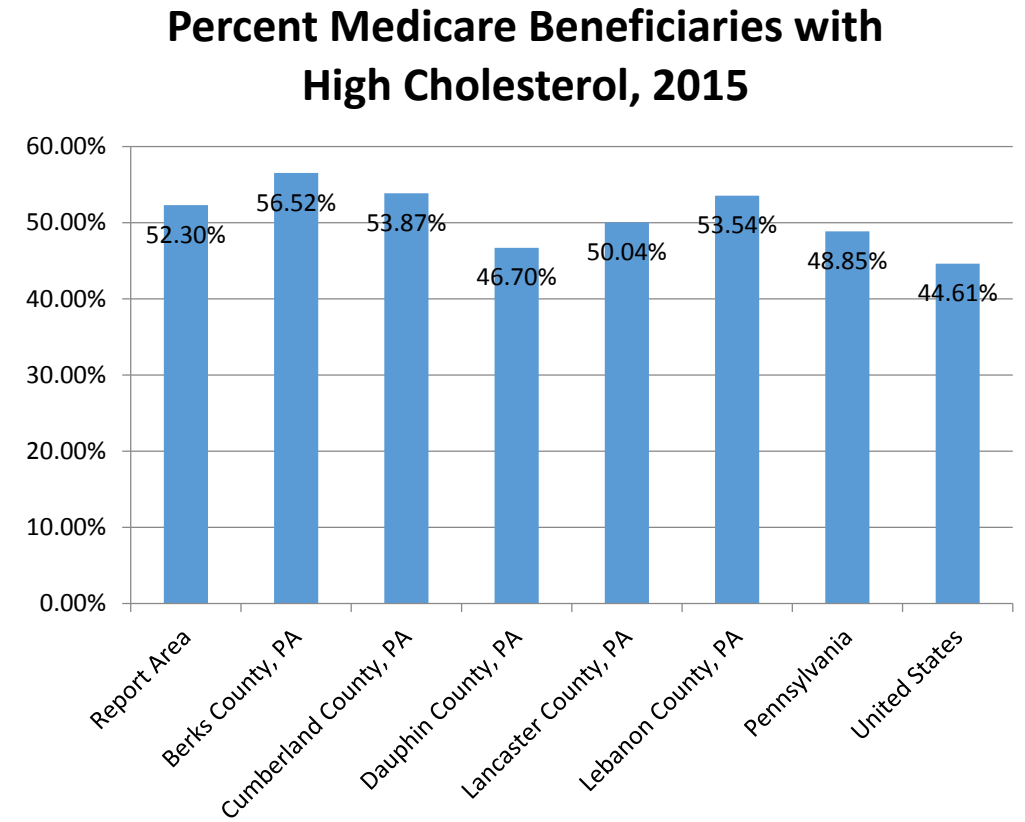
# High Blood Pressure – Medicare Beneficiaries (65+)

	Medicare Beneficiaries with High Blood Pressure	Percent with High Blood Pressure
Report Area	103,154	58.60%
Berks County, PA	28,837	60.27%
Cumberland County, PA	17,124	59.64%
Dauphin County, PA	13,261	56.14%
Lancaster County, PA	34,127	57.56%
Lebanon County, PA	9,805	59%
Pennsylvania	782,052	56.62%
United States	18,761,681	54.99%



# High Cholesterol – Medicare Beneficiaries (65+)

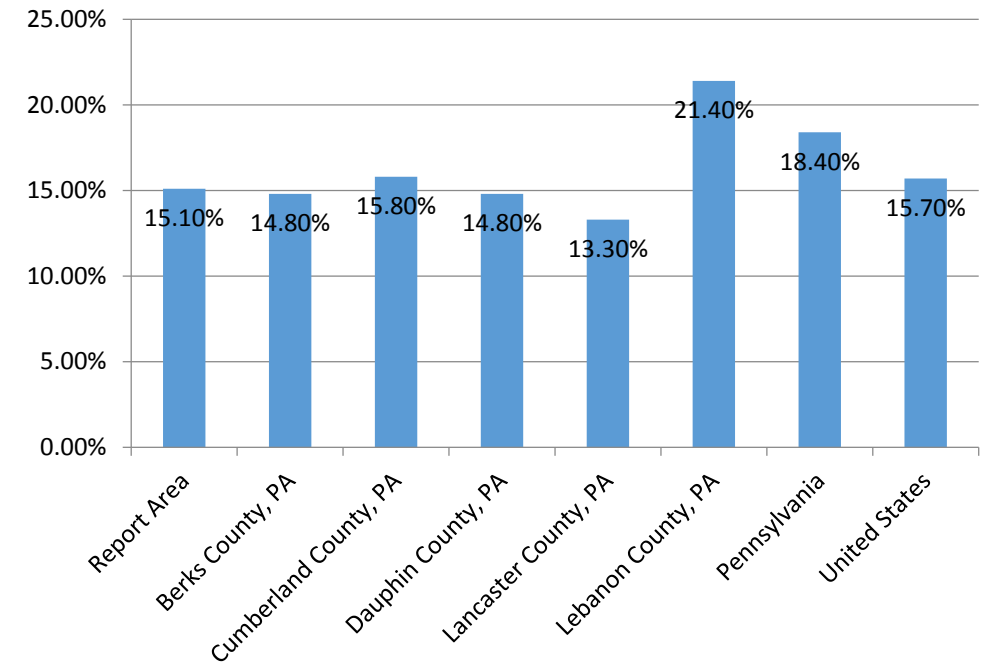
	Medicare Beneficiaries with High Cholesterol	Percent with High Cholesterol
Report Area	92,111	52.30%
Berks County, PA	27,041	56.52%
Cumberland County, PA	15,469	53.87%
Dauphin County, PA	11,031	46.70%
Lancaster County, PA	29,672	50.04%
Lebanon County, PA	8,898	53.54%
Pennsylvania	674,775	48.85%
United States	15,219,766	44.61%



# Poor Dental Health

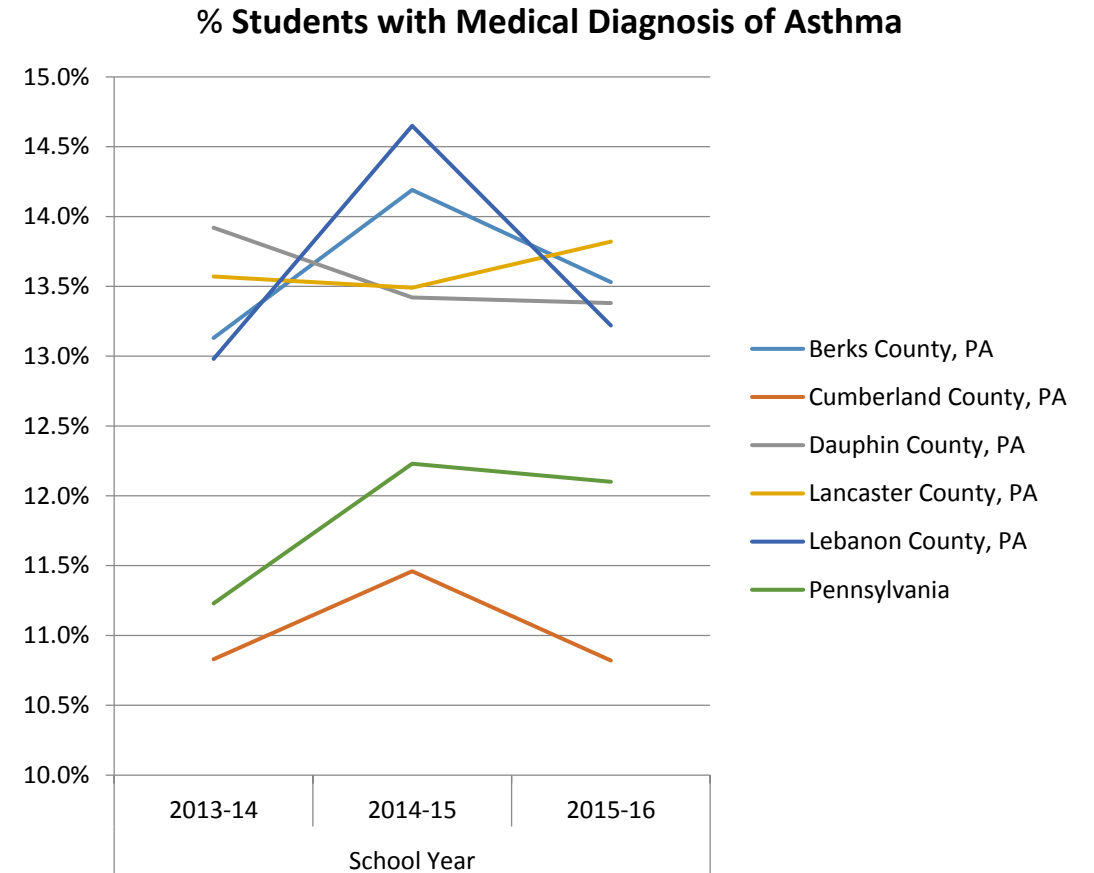
	Total Adults (18+) with Poor Dental Health	Percent Adults with Poor Dental Health
Report Area	177,284	15.10%
Berks County, PA	45,769	14.80%
Cumberland County, PA	28,873	15.80%
Dauphin County, PA	30,117	14.80%
Lancaster County, PA	50,906	13.30%
Lebanon County, PA	21,619	21.40%
Pennsylvania	1,814,547	18.40%
United States	36,842,620	15.70%

**Percent Adults (18+) with Poor Dental Health, 2006-2010**



# Childhood Asthma

	Asthma		
	2013-14	2014-15	2015-16
Berks County, PA	13.1%	14.2%	13.5%
Cumberland County, PA	10.8%	11.5%	10.8%
Dauphin County, PA	13.9%	13.4%	13.4%
Lancaster County, PA	13.6%	13.5%	13.8%
Lebanon County, PA	13.0%	14.7%	13.2%
Pennsylvania	11.2%	12.2%	12.1%

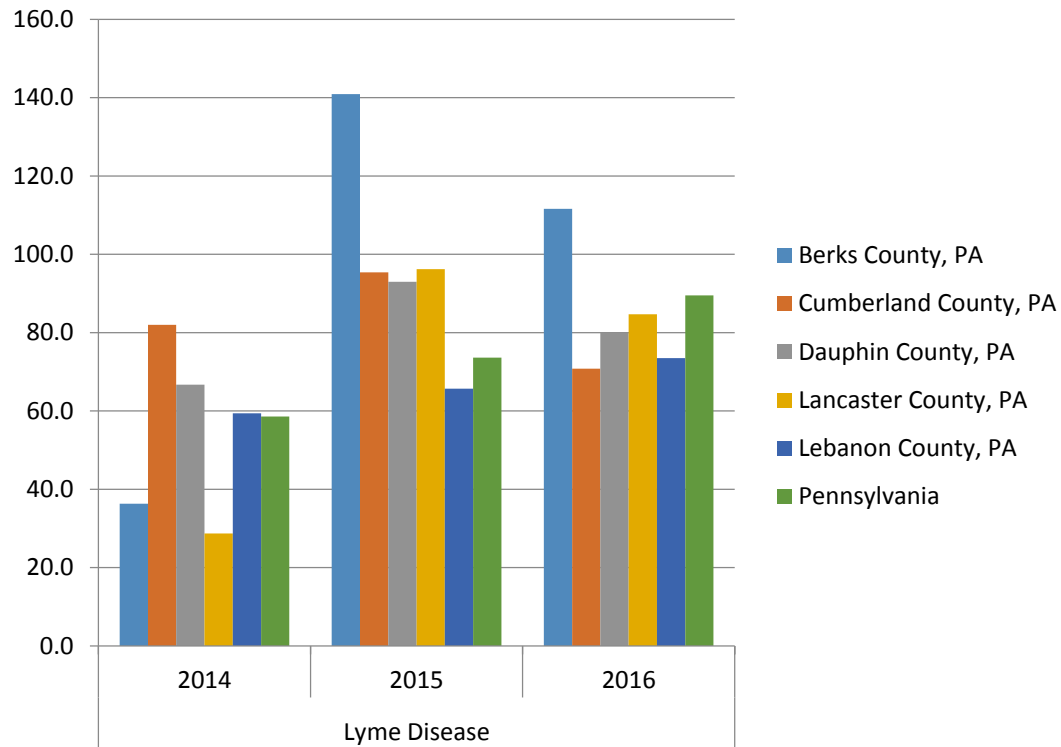


# Communicable Diseases

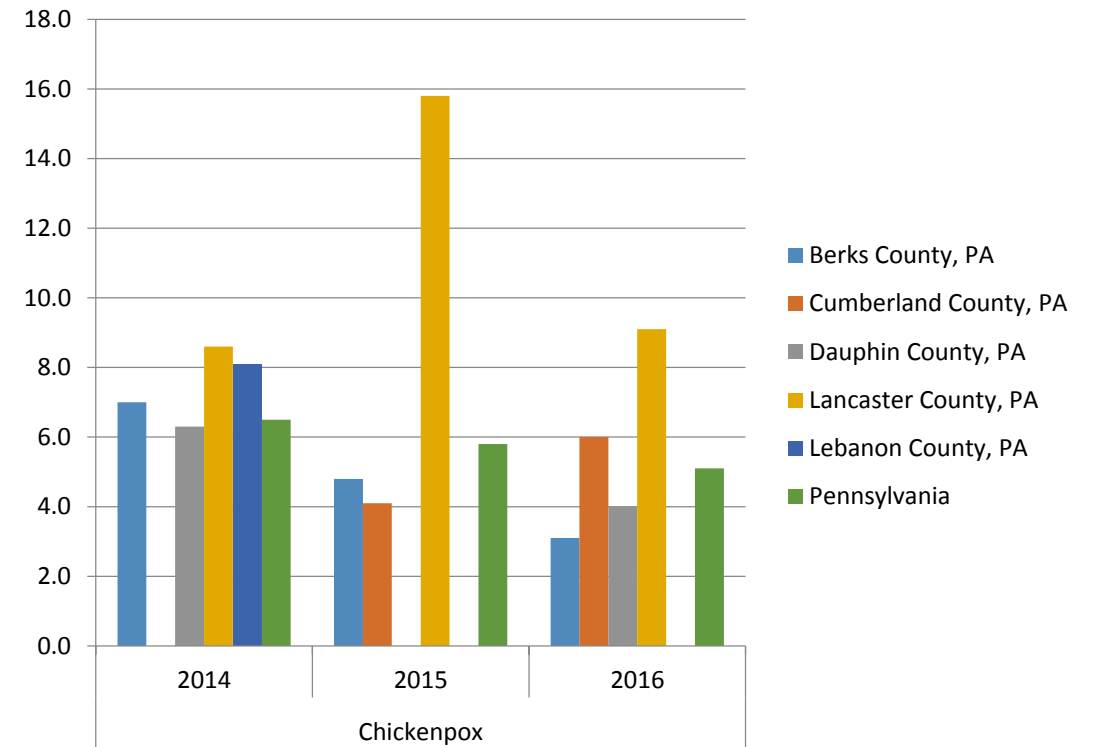
Communicable Disease (Other Than STD): Crude/Age-Specific Rates per 100,000												
	Lyme Disease			Chickenpox			Hepatitis B Chronic			Campylobacter		
	2014	2015	2016	2014	2015	2016	2014	2015	2016	2014	2015	2016
<b>Berks County, PA</b>	36.3	140.9	111.6	7.0	4.8	3.1	16.7	7.9	7.2	7.0	50.6	57.4
<b>Cumberland County, PA</b>	82.0	95.4	70.8	ND	4.1	6.0	18.9	7.7	14.1	6.6	14.2	10.9
<b>Dauphin County, PA</b>	66.7	93.0	80.0	6.3	ND	4.0	21.0	8.1	12.4	7.4	10.3	8.0
<b>Lancaster County, PA</b>	28.7	96.2	84.7	8.6	15.8	9.1	14.8	7.6	4.6	16.3	18.1	16.0
<b>Lebanon County, PA</b>	59.4	65.7	73.5	8.1	ND	ND	10.3	ND	9.4	8.8	12.4	22.3
<b>Pennsylvania</b>	58.6	73.6	89.5	6.5	5.8	5.1	15.0	6.7	9.1	11.2	18.7	18.3

# Communicable Diseases

## Lyme Disease: Crude/Age-Specific Rates per 100,000



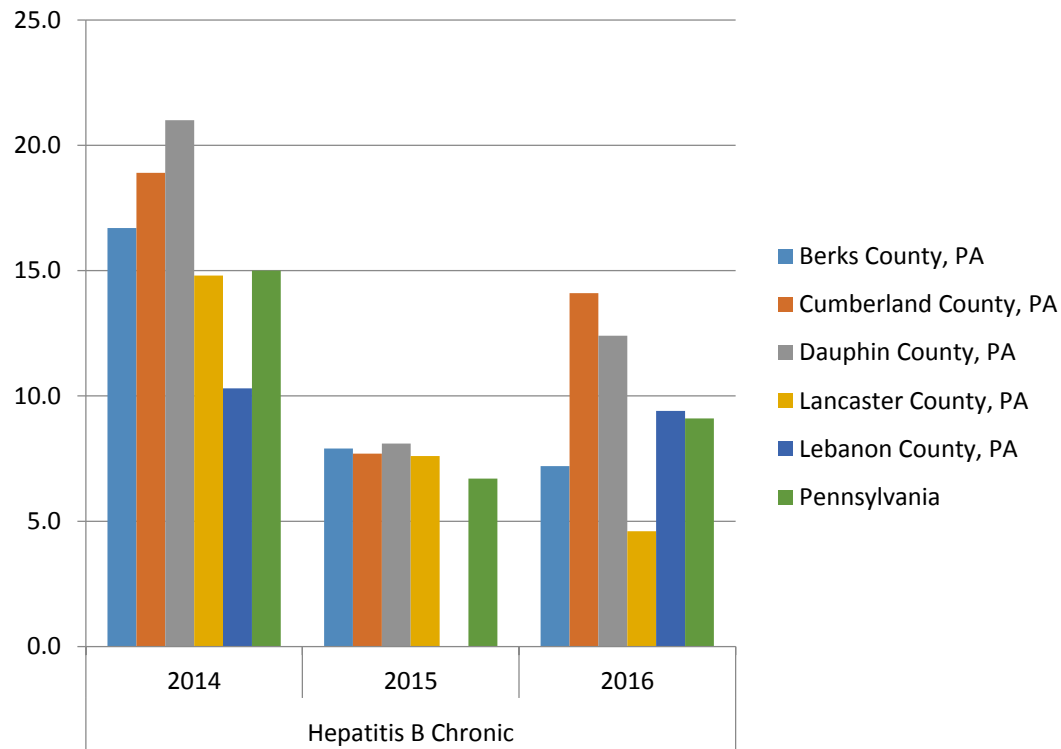
## Chickenpox: Crude/Age-Specific Rates per 100,000



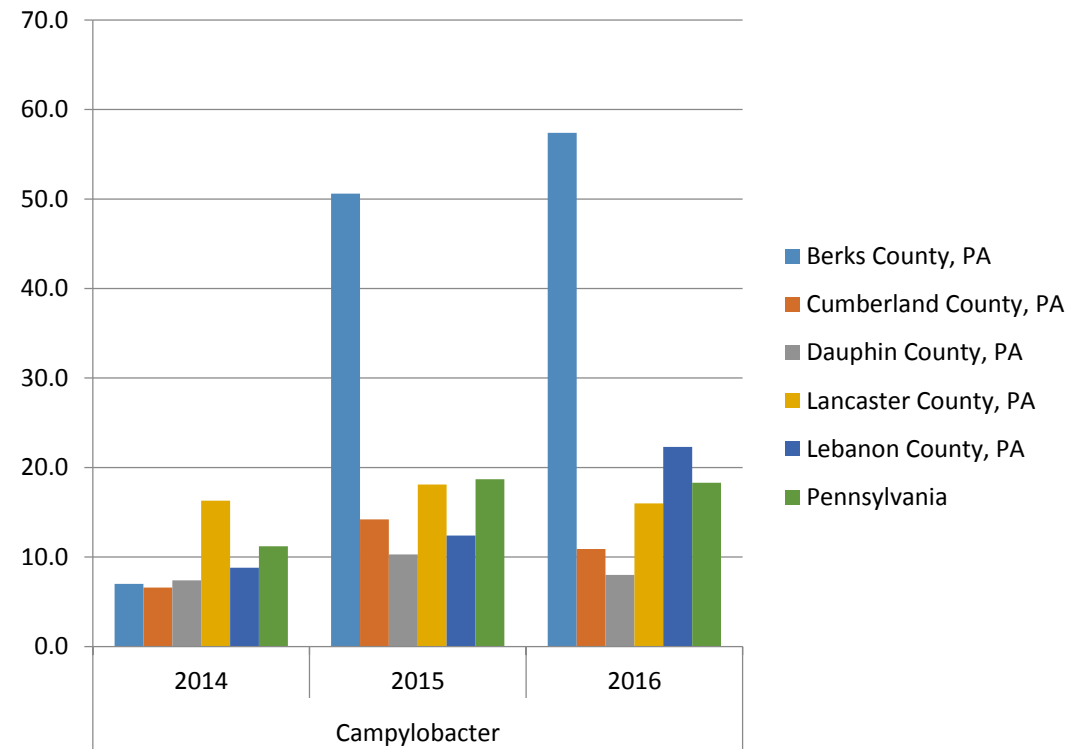


# Communicable Diseases

## Hepatitis B Chronic: Crude/Age-Specific Rates per 100,000



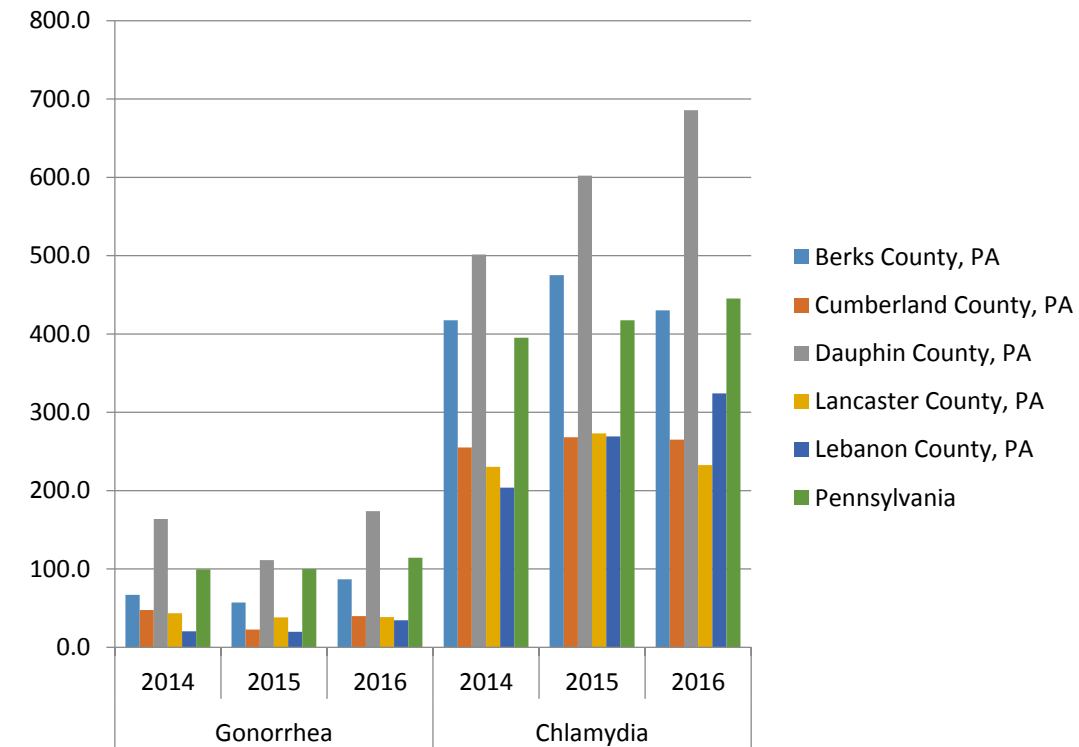
## Campylobacter: Crude/Age-Specific Rates per 100,000



# Sexually Transmitted Diseases

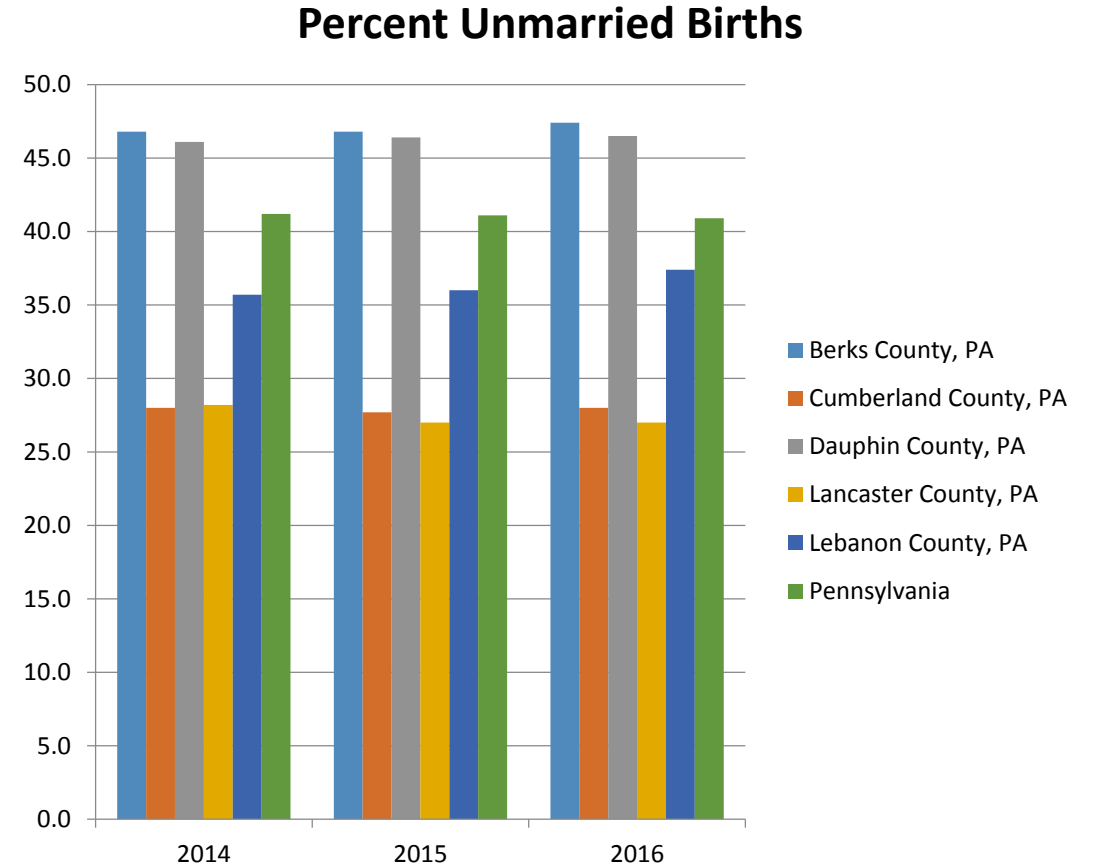
Sexually Transmitted Diseases (STDs): Crude/Age-Specific Rates per 100,000						
	Gonorrhea			Chlamydia		
	2014	2015	2016	2014	2015	2016
Berks County, PA	67.0	57.1	86.8	417.5	475.1	430.1
Cumberland County, PA	47.6	22.7	39.8	255.2	268.3	265.2
Dauphin County, PA	163.9	111.4	173.9	501.4	602.2	685.8
Lancaster County, PA	43.5	38.2	38.6	230.4	273.2	232.7
Lebanon County, PA	20.5	19.7	34.6	203.9	269.2	324.1
Pennsylvania	99.4	99.9	114.3	395.2	417.6	445.4

**Sexually Transmitted Diseases (STDs):  
Crude/Age-Specific Rates per 100,000**



# Unmarried Births

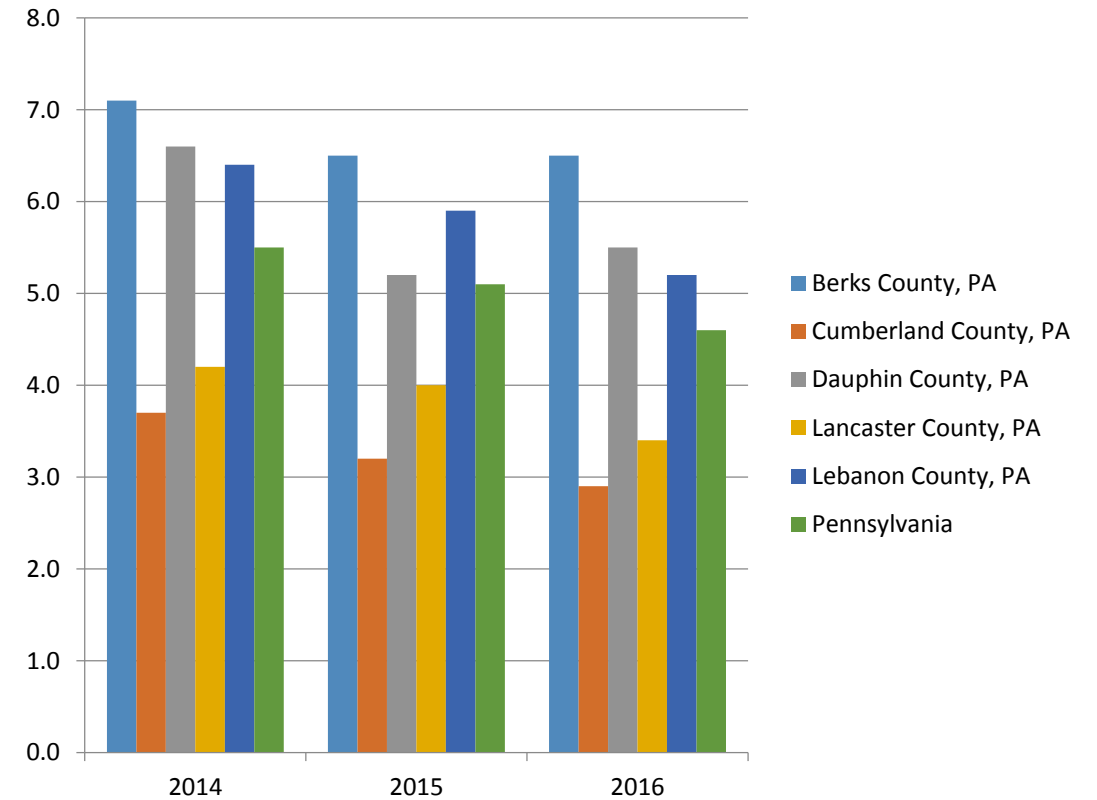
Percent Unmarried Births			
	2014	2015	2016
Berks County, PA	46.8	46.8	47.4
Cumberland County, PA	28.0	27.7	28.0
Dauphin County, PA	46.1	46.4	46.5
Lancaster County, PA	28.2	27.0	27.0
Lebanon County, PA	35.7	36.0	37.4
Pennsylvania	41.2	41.1	40.9



# Teen Births

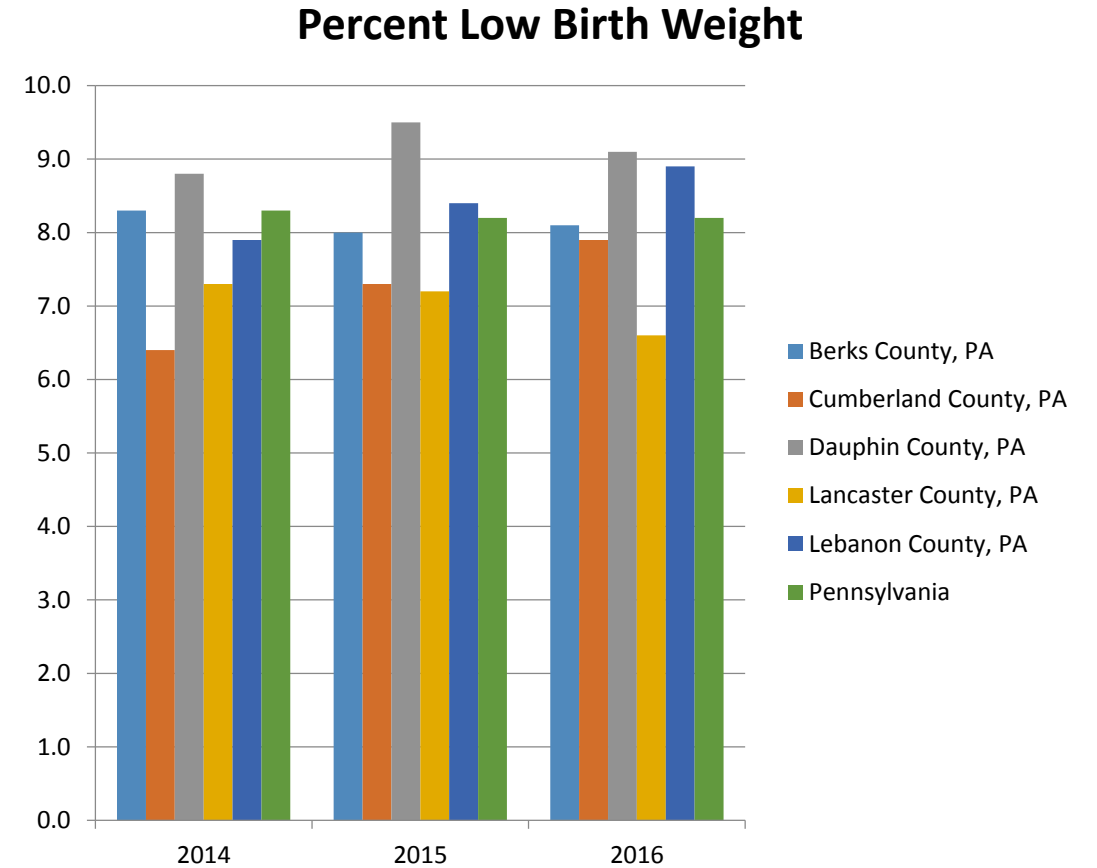
Percent Teen Births: Age 15-19			
	2014	2015	2016
Berks County, PA	7.1	6.5	6.5
Cumberland County, PA	3.7	3.2	2.9
Dauphin County, PA	6.6	5.2	5.5
Lancaster County, PA	4.2	4.0	3.4
Lebanon County, PA	6.4	5.9	5.2
Pennsylvania	5.5	5.1	4.6

Percent Teen Births: Age 15-19



# Low Birth Weight

Percent Low Birth Weight			
	2014	2015	2016
Berks County, PA	8.3	8.0	8.1
Cumberland County, PA	6.4	7.3	7.9
Dauphin County, PA	8.8	9.5	9.1
Lancaster County, PA	7.3	7.2	6.6
Lebanon County, PA	7.9	8.4	8.9
Pennsylvania	8.3	8.2	8.2



# Mammograms

Percent of Female Medicare Beneficiaries Age 67-69 with Mammogram, 2014			
Report Area	Female Medicare Enrollees Age 67-69	Female Medicare Enrollees with Mammogram in Past 2 Years	Percent Female Medicare Enrollees with Mammogram in Past 2 Years
Report Area	10,900	7,160	65.7%
Berks County, PA	3,145	2,018	64.2%
Cumberland County, PA	1,727	1,124	65.1%
Dauphin County, PA	1,412	849	60.2%
Lancaster County, PA	3,611	2,492	69.0%
Lebanon County, PA	1,005	676	67.3%
Pennsylvania	91,755	59,441	64.8%
United States	2,395,946	1,510,847	63.1%

# Colon Cancer Screening

Colon Cancer Screening (Ever), Percent of Adults Age 50+ by County, BRFSS 2006-12				
	Total Population Age 50+	Estimated Population Ever Screened for Colon Cancer	Crude Percentage	Age-Adjusted Percentage
<b>Report Area</b>	420,650	279,454	66.40%	63.90%
<b>Berks County, PA</b>	107,589	75,850	70.50%	68.10%
<b>Cumberland County, PA</b>	66,081	45,464	68.80%	66%
<b>Dauphin County, PA</b>	70,773	47,772	67.50%	65.60%
<b>Lancaster County, PA</b>	136,945	84,769	61.90%	59.40%
<b>Lebanon County, PA</b>	39,262	25,599	65.20%	61.30%
<b>Pennsylvania</b>	3,524,771	2,301,675	65.30%	62.10%
<b>United States</b>	75,116,406	48,549,269	64.60%	61.30%

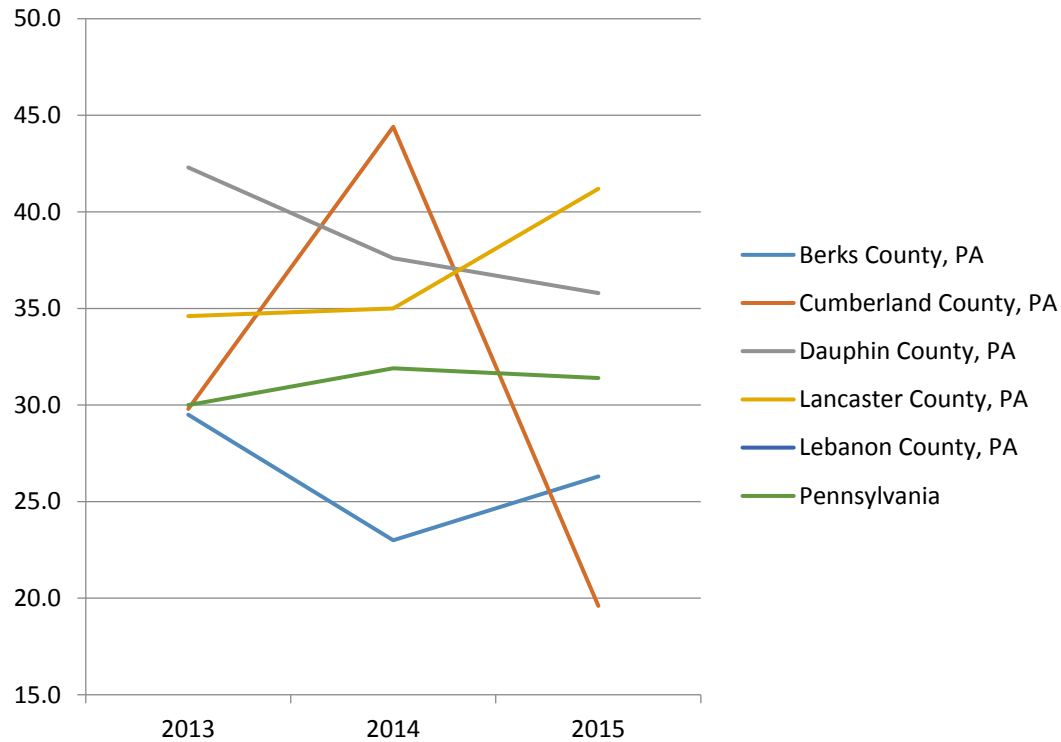
# Cancer Incidence

Cancer Incidence: Age-Adjusted Rates per 100,000 (2013-2015)												
	Melanoma - Female			Melanoma - Male			Breast Cancer - Female			Prostate Cancer - Male		
	2013	2014	2015	2013	2014	2015	2013	2014	2015	2013	2014	2015
<b>Berks County, PA</b>	19.1	18.6	19.5	29.5	23.0	26.3	129.2	118.5	122.7	113.7	95.8	117.3
<b>Cumberland County, PA</b>	22.8	27.3	18.8	29.8	44.4	19.6	131.6	124.3	132.7	68.7	65.9	62.0
<b>Dauphin County, PA</b>	18.9	18.1	20.5	42.3	37.6	35.8	122.8	144.6	129.3	97.0	88.9	108.5
<b>Lancaster County, PA</b>	20.6	17.7	26.3	34.6	35.0	41.2	126.4	129.4	119.1	79.2	76.3	83.6
<b>Lebanon County, PA</b>	24.8	23.3	27.1	ND	ND	27.1	124.4	120.7	163.5	85.6	72.8	91.3
<b>Pennsylvania</b>	20.4	21.8	21.8	30.0	31.9	31.4	130.8	132.0	131.2	101.2	92.0	104.4

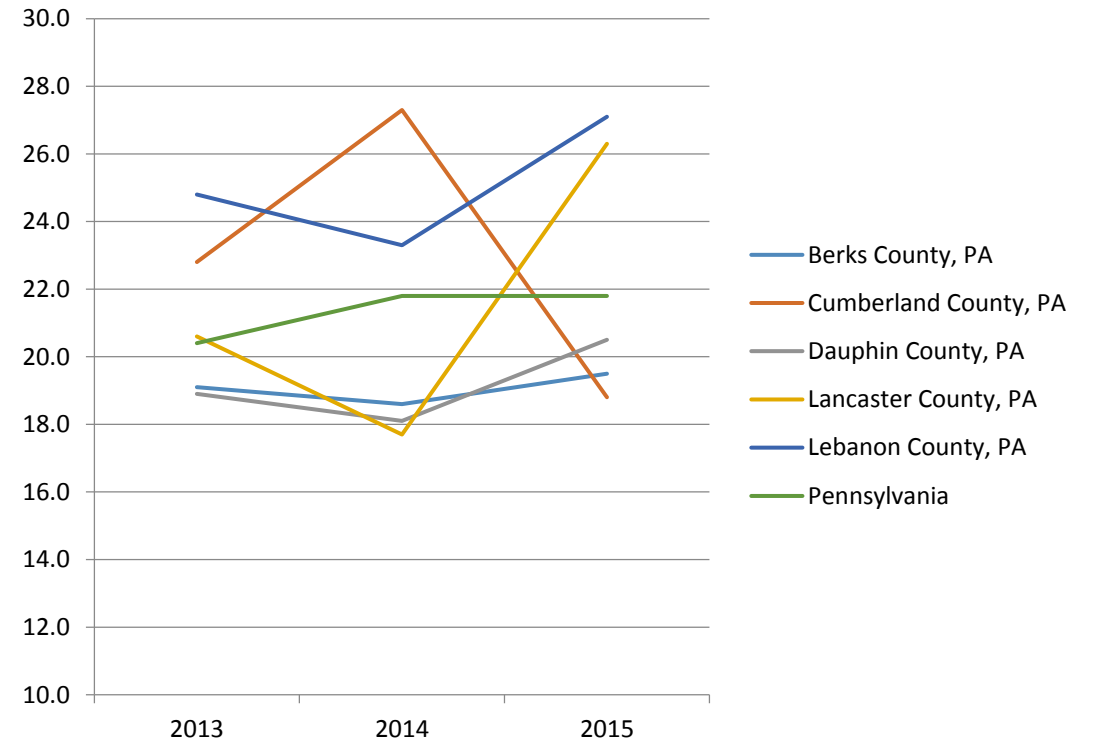


# Skin Cancer Incidence

## Melanoma of the Skin - Male (Age-Adjusted Rates per 100,000)

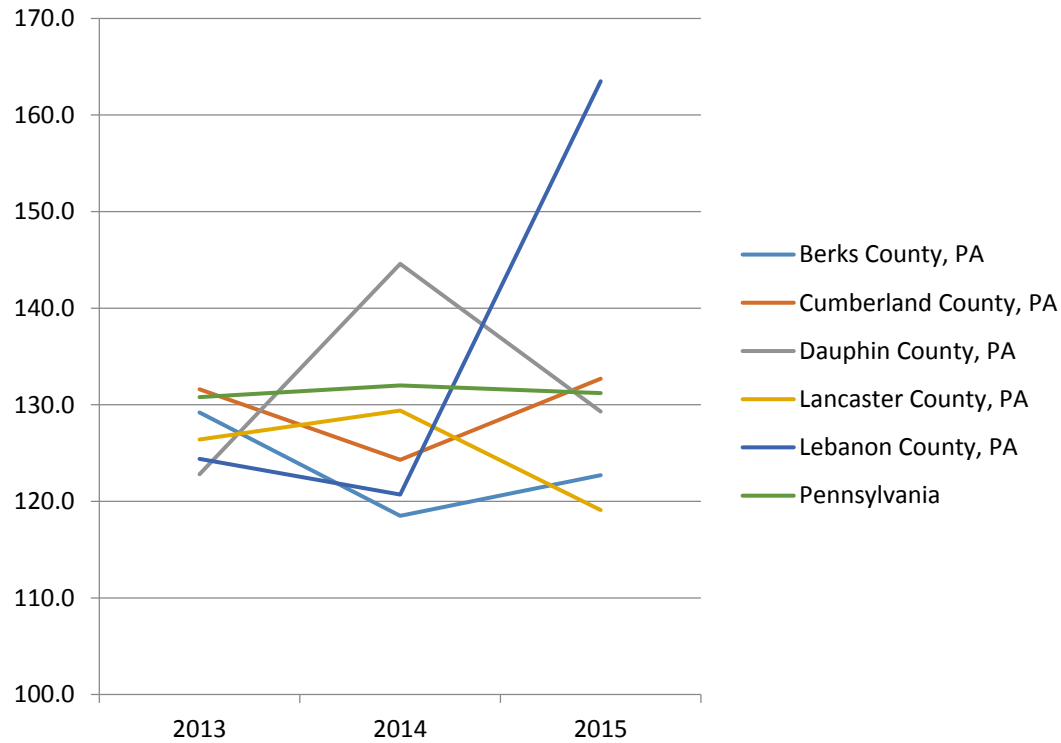


## Melanoma of the Skin - Female (Age-Adjusted Rates per 100,000)

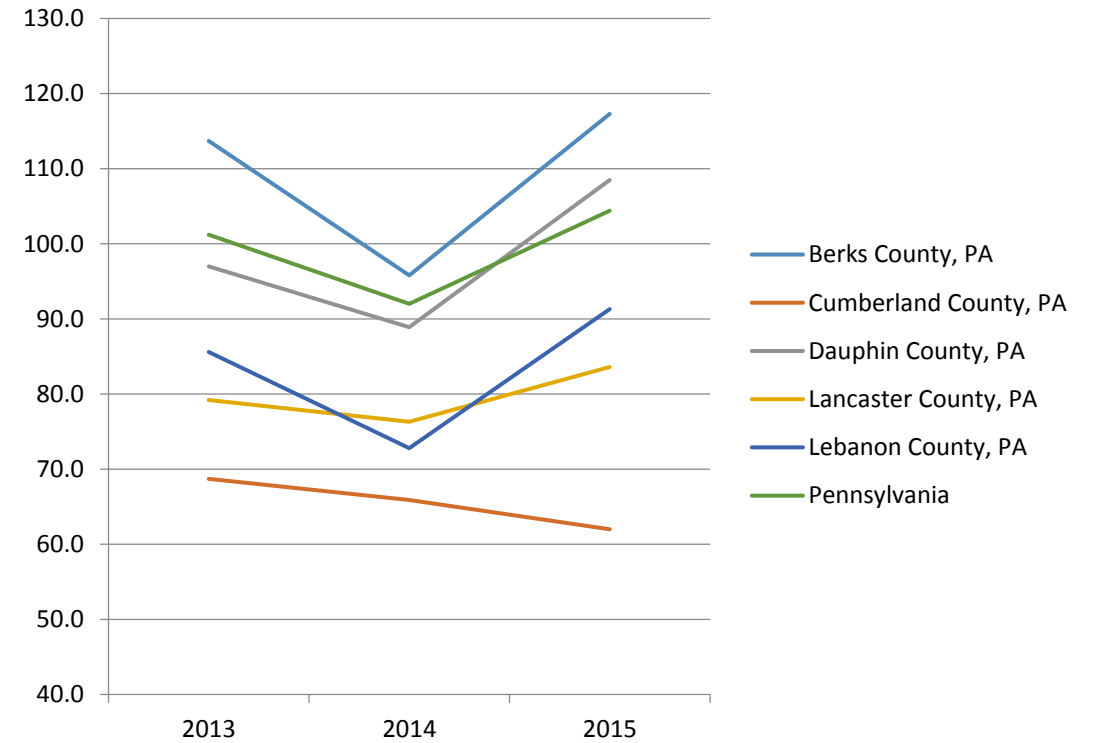


# Cancer Incidence

## Breast Cancer - Female (Age-Adjusted Rates per 100,000)



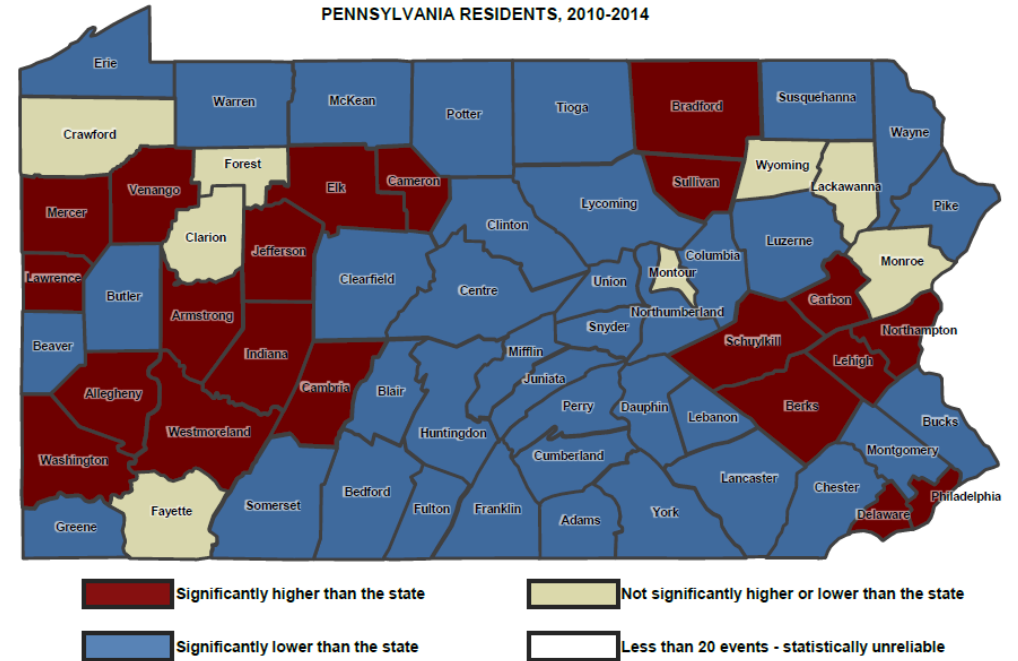
## Prostate Cancer - Male (Age-Adjusted Rates per 100,000)



# Injury Hospitalizations

Injury Hospitalizations - 2010-2014 Age -Adjusted Rates Per County		
	Motor Vehicle Traffic	All Unintentional Injuries
Berks County, PA	87.1	802.6
Cumberland County, PA	60.9	603.4
Dauphin County, PA	71.9	566.4
Lancaster County, PA	72.1	610.1
Lebanon County, PA	90.0	526.9
Pennsylvania	81.9	777.3

**INJURY HOSPITALIZATIONS: ALL INJURIES**  
 AGE-ADJUSTED HOSPITALIZATION RATES BY COUNTY,  
 WITH SIGNIFICANT DIFFERENCES VERSUS THE STATE  
 PENNSYLVANIA RESIDENTS, 2010-2014



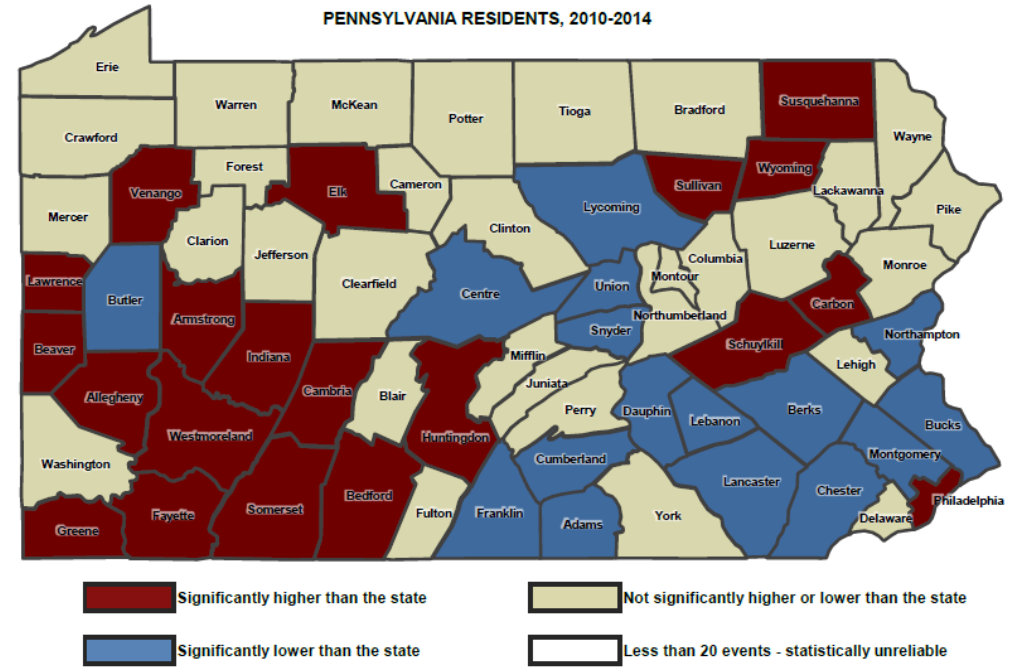
NOTES: Age-adjusted rates are computed by the direct method using the 2000 standard million population. See Technical Notes.

# Injury Deaths

## Injury Deaths - 2010-2014 Age -Adjusted Death Rates per County

	Suicide	Traumatic Brain Injury
Berks County, PA	14.7	18.4
Cumberland County, PA	13.0	13.2
Dauphin County, PA	11.7	13.1
Lancaster County, PA	10.1	11.4
Lebanon County, PA	12.5	13.3
Pennsylvania	12.6	16.0

**INJURY DEATHS: ALL INJURIES**  
AGE-ADJUSTED DEATH RATES BY COUNTY,  
WITH SIGNIFICANT DIFFERENCES VERSUS THE STATE  
PENNSYLVANIA RESIDENTS, 2010-2014



NOTES: Age-adjusted rates are computed by the direct method using the 2000 standard million population. See Technical Notes.

# Secondary Data Summary

- Demographics

- Cumberland County is expected to have the greatest annual growth rate of all five counties from 2017-2022
- Lebanon County has the highest percentage of population age 65+ and Lancaster has the highest percentage age 0-17.
- The white population is expected to decrease in all five counties over the next five years.
- In the five-county region as a whole, the percentage of individuals greater than 25 years of age without a high school diploma is higher than both the state and nation.
- In Berks County, the percentage of children under the age of 18 that are living in poverty is higher than both the state and the nation.

- Areas of Strength

- The uninsured rate among adults and children continues to decline in all five counties.
- Drug overdose deaths have declined in Lebanon county from 2015 to 2016.
- Overall decline in the number of adults reporting no leisure-time physical activity.
- Adult obesity is decreasing in Dauphin and Lebanon counties.

# Secondary Data Summary

- Areas of Opportunity
  - The uninsured rate among 0-18 year olds in Lancaster and Lebanon counties is significantly higher than the state and nation.
  - From 2010-2015, the rate of primary care physicians has decreased in Lebanon County, and the rate remains below the state and national levels in Berks, Lancaster, and Lebanon counties.
  - Over 1/3 of students reported feeling sad or depressed in all counties.
  - While cigarette use is declining among students, approximately 14% of students reported vaping in 2015.
  - Cigarette use is also declining among adults, but binge drinking has been increasing in all five counties over the past three years.
  - The drug-related overdose death rate increased in all counties, except Lebanon.
  - Adult obesity has continued to increase from 2010-2014 in Berks and Cumberland counties
  - From 2010 to 2015, the rate of fitness and recreation facilities has decreased in all five counties.
  - All counties except Dauphin had a higher percentage of Medicare fee-for-service population that had high blood pressure or cholesterol, compared to the state and nation.